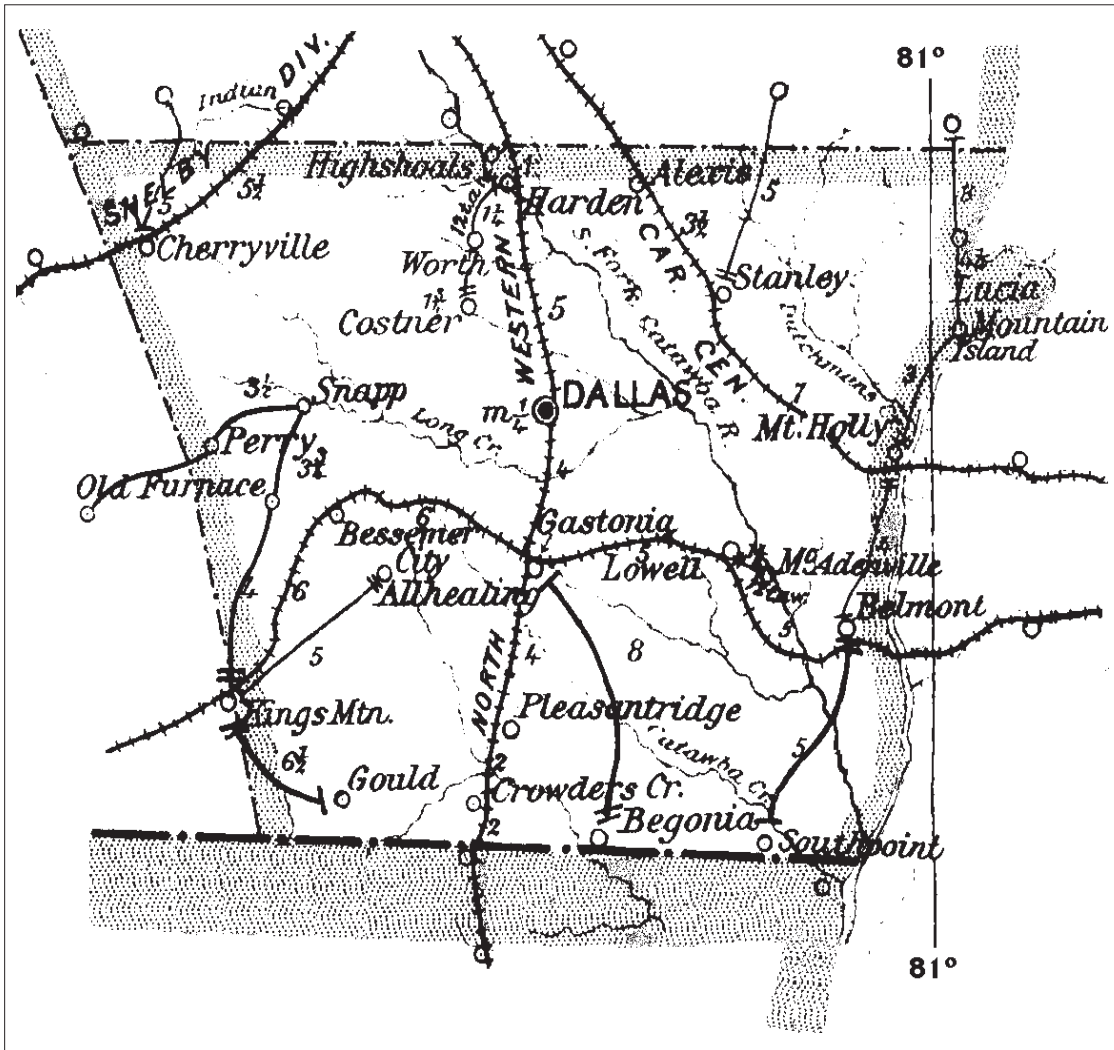


GASTON COUNTY

Formed 21 December 1846 from Lincoln

Number of Post Offices - 57
Number with postmarks known - 37

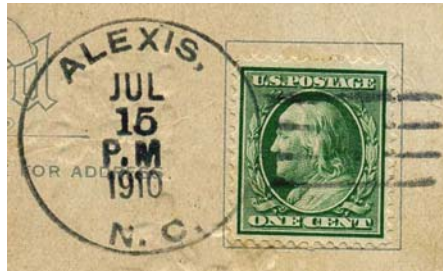


GASTON COUNTY

Alexis

(Gaston)

George W. Abernathy	2 Apr 1894
Solomon A. Stroup	5 Mar 1901
William H. Abernethy	8 Oct 1904
Samuel L. McAlister	12 Jun 1907
Oliver C. Hager, Acting	29 Feb 1932
Oliver C. Hager	14 May 1932
Annie B. Thompson, Acting	11 Feb 1941
Annie B. Thompson	18 Apr 1941
Richard C. Bradshaw	1 Dec 1979
Mark E. Mauney Officer-In-Charge	29 Nov 1990
Gaynelle McSorley Officer-In-Charge	13 Feb 1991
Susan P. Davern	4 May 1991
Jackie Morrison Officer-In-Charge	2 Oct 1992
Carol T. Harless	16 Dec 2000
Dale C. Tate Officer-In-Charge	19 Jan 2001
Dale C. Tate	21 Apr 2001
Cathy A. Lineberger	13 Mar 2010



Type 1
31.5 mm Black
Doane Type 3-1
15 Jul 1910
24 Dec 1921



Type 2
32.5 mm Black
1910 Type B 4-Bar
6 Oct 1910
25 Sep 1916



Type 3
32 mm Black
1930 Type E 4-Bar
2 Sep 1931
27 Dec 1940



Type 4
32.5 mm Black
1936 Type F/1 4-Bar
18 Feb 1942
14 Aug 1945

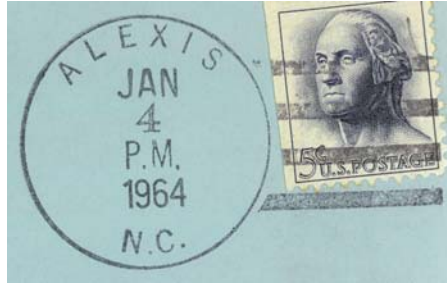


Type 5
30.5 mm Black
Metal Duplex Type ?
1 Oct 1948
20 Jun 1960

GASTON COUNTY

Alexis (Cont.)

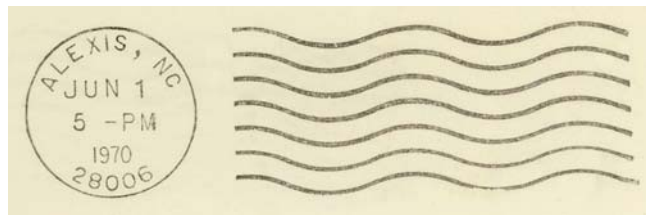
(Gaston)



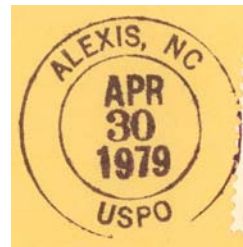
Type 6
33 mm Black
1936 Type F/1 4-Bar
12 Dec 1963
31 Dec 1964



Type 7
33.5 mm Black
1963 Type F/2 4-Bar (28006)
13 Jun 1966
20 Nov 1974



Type 8
22.5 mm Black
International Machine
Type ATS/z 2724 (28006)
1 Jun 1970
16 May 1983



Type 9
29.5 mm Magenta
30 Apr 1979



Type 10
28 mm Purple
13 Feb 1985
28 mm Magenta
8 Oct 1993



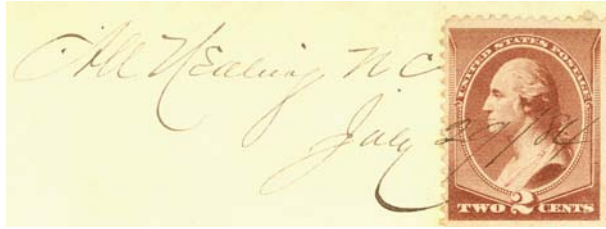
Type 11
29.5 mm Red
Self-Inking Postmarker (28006)
9 Aug 1991
29.5 mm Black
22 Feb 2007

GASTON COUNTY

All Healing

(Gaston)

Francis M. Garrett 21 Feb 1883
John F. W. Thomas 26 Nov 1887
Cyrus A. Hampton 14 Apr 1891
Samuel T. Whitesides 12 Jul 1899
Enoch B. Weir 4 Sep 1901
Discontinued 13 Sep 1902
Mail to Gastonia



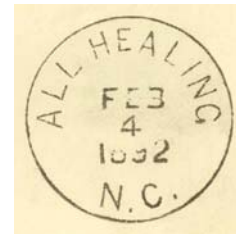
Manuscript
29 Jul 1884



Type 1
26.5 mm Black
4 Oct 188x



Type 2
27.5 mm Black
6 Jul 1890



Type 3
27.5 mm Black
4 Feb 1892

Alula

(Gaston)

Joseph L. Thornburg 17 Oct 1901
Discontinued 2 Jan 1907
Mail to Kings Mountain



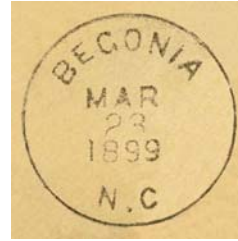
Type 1
29 mm Black
11 Mar 1903

GASTON COUNTY

Begonia

(Gaston)

Samuel C. Johnson	17 Jun 1880
Discontinued	6 Sep 1880
Samuel C. Johnson	8 Nov 1880
Charles E. Huffstetler	20 Jun 1894
Robert E. Johnson	3 Mar 1900
Discontinued	15 Mar 1905
Mail to Gastonia	



Type 1
28 mm Black
9 Mar 1897
28 Mar 1899

Belmont, name changed from Garibaldi

(Gaston)

John N. Mellon	8 May 1886
George M. Gullick	22 Aug 1888
John W. Armstrong	31 May 1889
Abram Stowe	20 Oct 1893
John W. Armstrong	28 Aug 1897
DeLambert P. Stowe	30 Apr 1915
A. Bryan Leeper, Acting	1 Mar 1921
Justus E. Armstrong	25 Oct 1921
J. Andrew Gullick, Acting	21 Feb 1934
William M. Jefferson	18 Jun 1934
Boyce L. Maynard	1 Jun 1944
Edgar W. Bullard, Acting	1 Oct 1946
Edgar W. Bullard	2 Jul 1947
Boyce L. Maynard, Acting	21 May 1951
Edgar W. Bullard	15 Sep 1953
James M. Armstrong, Acting	30 Jun 1954
James M. Armstrong	22 Jun 1955
Mary H. Wallace, Acting	31 Jan 1960
Mary H. Wallace	21 Sep 1961
Lester I. Carpenter, Acting	24 Feb 1961
Lester I. Carpenter	21 Sep 1961
James L. Brandon Officer-In-Charge	28 May 1971
James L. Brandon	11 Dec 1971
John R. Frase Officer-In-Charge	10 Jan 1980
Arthur L. Allen	31 May 1980
John C. McKeon, Jr.	13 Apr 1985
David C. Ball Jr.	15 Feb 1997
Antonio B. Cuevas	3 Apr 2004



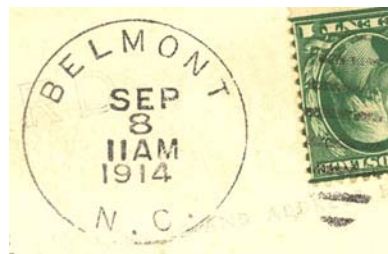
Type 1
27 mm Black
7 Oct 1886
25 Apr 1888



Type 2
28 mm Black
31 Jan 1893
17 Feb 1897



Type 3
28.5 mm Black
19 Mar 1899
21 Sep 1900



Type 4
29.5 mm Black
Metal Duplex Type H2
12 Oct 1910
24 Nov 1915



Type 5
22 mm Black
Columbia Machine
Type G 2W
13 Feb 1920
21 May 1925

GASTON COUNTY

Belmont (Cont.)

(Gaston)



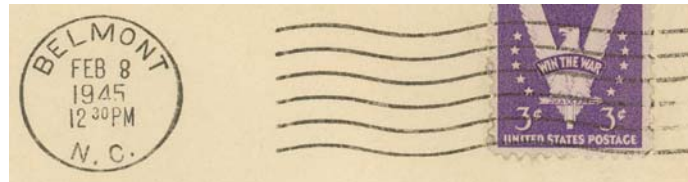
Type 6
23 mm Black
American Machine
Type A14 Long Field Hand Cut
1927
13 Aug 1930



Type 7
21 mm Black
Universal Machine
Type DT 300
18 Jul 1934
7 Feb 1943



Type 8
27.5 mm Black
Metal Duplex Type E2
3 Apr 1940
27 Mar 1953



Type 9
21 mm Black
Universal Machine
Type DT 300
8 Feb 1945
25 Jul 1947



Type 10
20.5 mm Black
Universal Machine
Type DT 300
23 Feb 1952
22 May 1957



Type 11
28 mm Magenta
13 Jul 1955
10 Oct 1963

GASTON COUNTY

Belmont (Cont.)

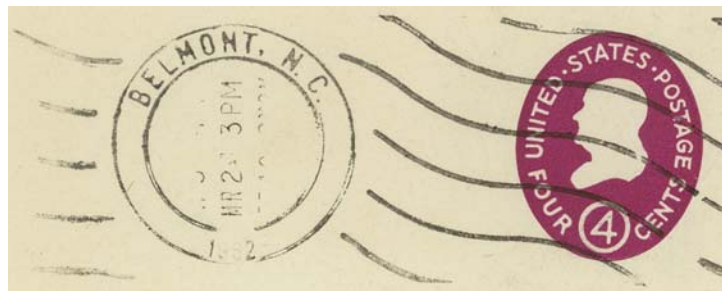
(Gaston)



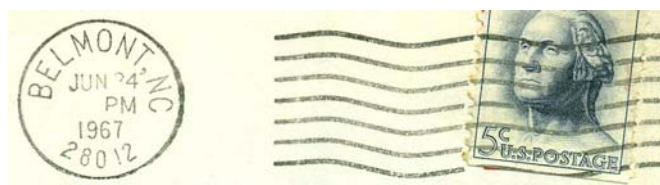
Type 12
20.5 mm Black
Universal Machine
Type DT 400
(Pray/For/Peace)
17 Dec 1959
10 Jun 1960



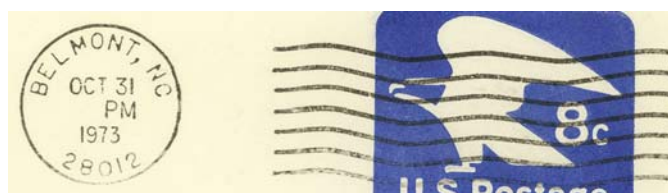
Type 13
21 mm Black
International Machine
Type J30
15 Nov 1960
29 May 1965



Type 14
31.5 mm Black
Handley hand-held roller
2 Mar 1962



Type 15
21.5 mm Black
International Machine
Type Hz30 (28012)
5 Oct 1965
24 Jun 1967



Type 16
21.5 mm Black
International Machine
Type Hz30 (28012)
11 Feb 1971
20 Dec 1978

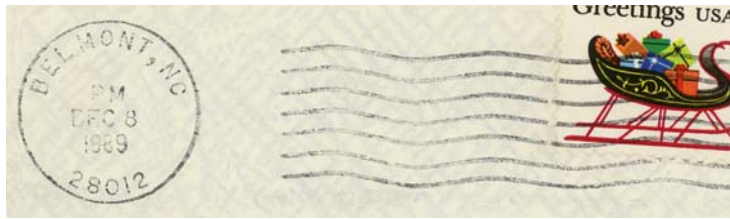
GASTON COUNTY

Belmont (Cont.)

(Gaston)



Type 17
29 mm Magenta
4 Dec 1979



Type 18
24 mm Black
Universal Machine
Type BTSz 200 (28012)
20 Jan 1989
8 Dec 1989



Type 19
28 mm Red
Self-Inking Postmarker
(28012-9998)
15 Feb 1992



Type 20
28 mm Red
Self-Inking Postmarker (28012)
25 Oct 1993



Type 21
30 mm Black
Self-Inking Postmarker
(28012-9998)
10 Feb 2006

GASTON COUNTY

Belmont (Cont.)

(Gaston)

Branch Cancels
Catawba Branch Station



Type 1
30 mm Black
25 Apr 1961
30 mm Magenta
18 Sep 1970
8 Jul 1985

North Belmont Branch Station



Type 1
28.5 mm Black
8 Sep 1937

GASTON COUNTY

Belmont (Cont.)

(Gaston)

Branch Cancels (Cont.)

North Belmont Branch Station (Cont.)



Type 2
30 mm Magenta
3 Feb 1956
13 Mar 1956

30 mm Black
29 Mar 1963



Type 3
31.5 mm Magenta
1 Mar 1961
30 Jun 1962



Type 4
28 mm Black
28 Dec 1962
12 Dec 1966



Type 5
27.5 mm Magenta
12 Jan 1977
4 Apr 1978



Type 6
28.5 mm Magenta
25 Mar 1986

GASTON COUNTY

Belmont (Cont.)

(Gaston)

Rural Station Cancels
Dec 1923
29 Apr 1933



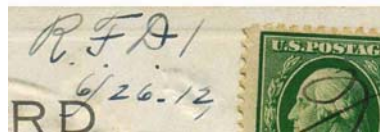
Type 1
31.5 mm Black
7 Jan 1927

Registered



Type 1
29 mm Magenta
1 Mar 1922

Rural Free Delivery



Type 11C(1)
26 Jun 1912

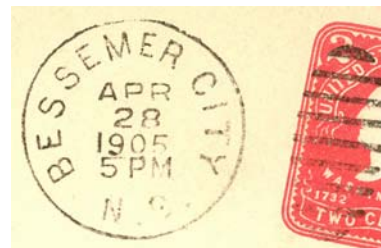
Bessemer City

(Gaston)

John A. Pinchback	30 Oct 1891
Rudolph L. Thornburg	10 Jun 1897
John P. Chandler	5 Mar 1908
W. L. Ormand	18 Jun 1913
John R. Rollins	13 Feb 1922
Edward P. Stabler, Acting	22 Mar 1934
Samuel B. Hovis	18 Jun 1934
Robert M. Kiser, Acting	31 Dec 1941
Robert M. Kiser	26 Jan 1944
Glen O. Pasour, Acting	27 Jun 1958
Glen O. Pasour	29 Apr 1960
John C. McKeon Officer-In-Charge	31 Dec 1983
Richard Earl Payne	14 Apr 1984
Everett Raymond Martin Officer-In-Charge	30 Oct 1990
Ronnie E. Keiber	4 May 1991
Walter C. Penley Officer-In-Charge	12 Aug 1992
David A. Willis	20 Feb 1993
William R. Taylor III Officer-In-Charge	7 Sep 2004
Juanita D. Meeks Officer-In-Charge	10 Jan 2005
William R. Taylor III	1 Oct 2005
Peter A. DeGregory	3 Jan 2009



Type 1
27.5 mm Black
14 Mar 1898
18 Feb 1900

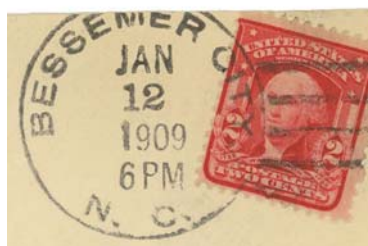


Type 2
30 mm Black
Metal Duplex Type H2
26 Mar 1900
4 Mar 1908

GASTON COUNTY

Bessemer City (Cont.)

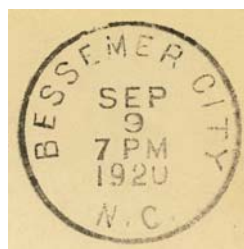
(Gaston)



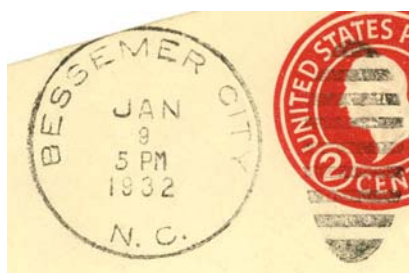
Type 3
32.5 mm Black
1908 Type A/2 4-Bar
25 Aug 1908
12 Jan 1909



Type 4
30.5 mm Black
Metal Duplex Type H2
24 Jun 1911
22 Aug 1925



Type 5
29.5 mm Black
Metal Duplex Type H2
9 Sep 1920



Type 6
30.5 mm Black
Metal Duplex Type H2
9 Jan 1932
12 Jul 1932

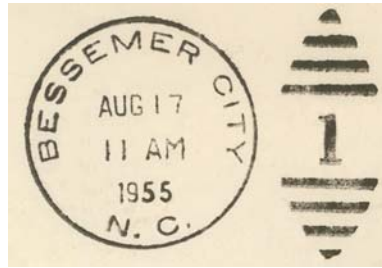


Type 7
30 mm Black
Metal Duplex Type H2
28 Jun 1934
1 Dec 1934

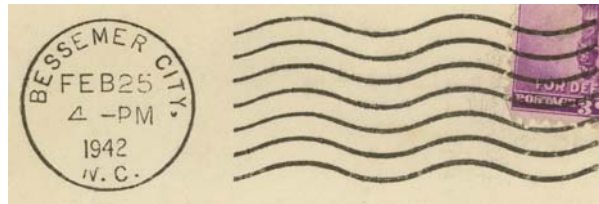
GASTON COUNTY

Bessemer City (Cont.)

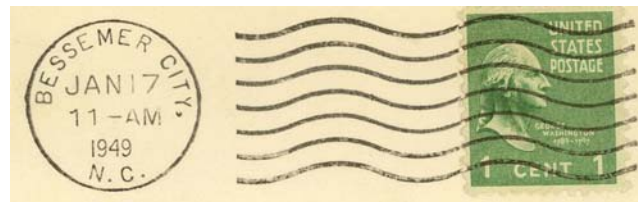
(Gaston)



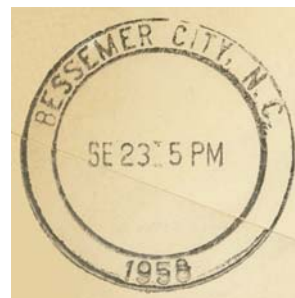
Type 8
30.5 mm Black
Metal Duplex Type ?
3 May 1941
17 Aug 1955



Type 9
23 mm Black
International Machine
Type AT/S 2721
25 Feb 1942
7 May 1946



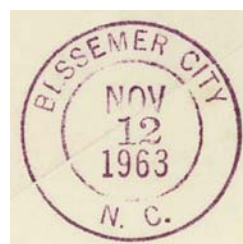
Type 10
23 mm Black
International Machine
Type AT/S 2722
17 Jan 1949



Type 11
35.5 mm Black
23 Sep 1958



Type 12
21 mm Black
Universal Machine
Type DT 300
9 Jan 1959
20 Jul 1965



Type 13
29 mm Magenta
12 Nov 1963

GASTON COUNTY

Bessemer City (Cont.)

(Gaston)



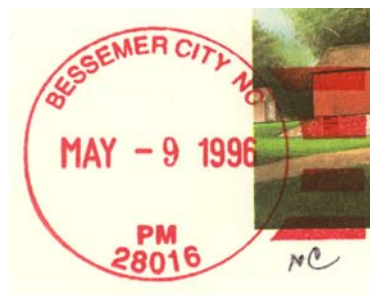
Type 14
21 mm Black
Universal Machine
Type DTSz 300 (28016)
8 Jul 1967
11 Feb 1985



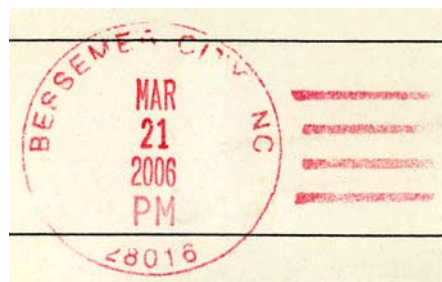
Type 15
33.5 mm Black
1963 Type F/2 4-Bar (28016)
16 Jun 1972
30 Dec 1972



Type 16
27.5 mm Magenta
14 Dec 1976



Type 17
34.5 mm Red
Self-Inking Postmarker (28016)
9 May 1996



Type 18
34 mm Red
Self-Inking Postmarker (28016)
1 Jun 2005
21 Mar 2006

GASTON COUNTY

Bessemer City (Cont.)

(Gaston)



Type 19
33.5 mm Black
Self-Inking Postmarker (28016)
2 Sep 2006
15 Aug 2007

Bethesda

(Gaston)

Charlie W. Elmore 5 Jan 1892
Discontinued 21 Feb 1894
Papers to Lowell

Brevard Station, moved from Stanley's Creek

(Gaston)

Alex R. Rutledge, CSA 20 Jan 1863
CSA office closed on or before 30 Apr 1865

*Brevard Station
Feb 28
NRB*

Manuscript
28 Feb 186x

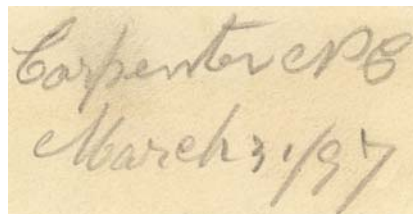
Carpenter

(Gaston)

Caleb Carpenter 31 May 1883
Discontinued 21 Apr 1898
Papers to Snapp

Carpenter CB

Manuscript
15 Feb 1889



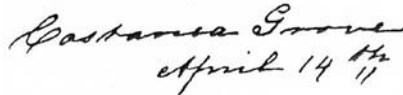
Manuscript
31 Mar 1897

GASTON COUNTY

Castania Grove, name changed from Forney's

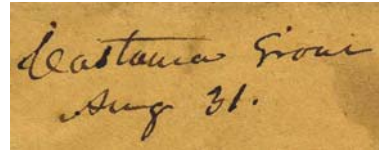
(Gaston)

William A. Bell	1 Aug 1855
Sidney X. Johnson	23 Dec 1856
Sidney X. Johnson, CSA	1 Aug 1861
CSA office closed on or before	30 Apr 1865
Federal office discontinued	6 Dec 1866
William O. Henkle	26 Feb 1868
John W. Armstrong	15 Dec 1868
Alexander Davis	9 Feb 1869
Moved to Lincoln County	28 Feb 1870



*Castania Grove
April 14th*

Manuscript
11 Jul 1857



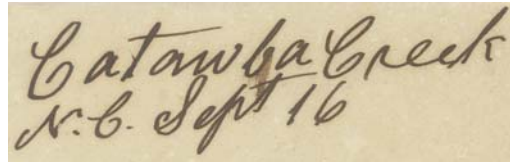
*Castania Grove
Aug 31.*

Manuscript
31 Aug 186x

Catawba Creek, from Lincoln County

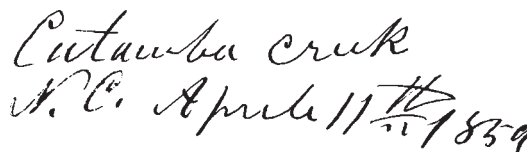
(Gaston)

Andrew B. Cox	21 Dec 1846
Samuel L. Campbell	7 Sep 1847
Alfred C. Dickson	29 Dec 1848
Elias M. Faires	23 Sep 1857
Discontinued	10 Mar 1860



*Catawba Creek
N.C. Sept 16*

Manuscript
16 Sep 184x
8 Sep 1855



*Catawba Creek
N.C. April 11th 1859*

Manuscript
11 Apr 1859
7 Sep 1859

Chalk

(Gaston)

John W. Smith	28 May 1883
Discontinued	9 Apr 1884
John W. Smith	28 Apr 1884
Discontinued	9 Nov 1889
Papers to Begonia	

Cherryville, name changed from White Pine

(Gaston)

Margaret Summit	2 Nov 1865
Sarah J. Summit	8 Mar 1867
John W. Quinn	10 Jul 1868
Henry Summit	26 Jan 1875
William J. McGinnas	6 Jan 1880
Marcus M. Huss	16 Apr 1889
Levi H. J. Hauser	22 Jun 1893
Jonas L. Stroup	28 Jun 1897
John J. George	5 Jul 1901
Thomas E. Summer	26 Jun 1905



Type 1
25 mm Black
16 Feb 187x

GASTON COUNTY

Cherryville (Cont.)

(Gaston)

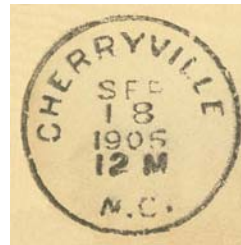
David S. Thornburg	24 Aug 1909
A. H. Huss	18 Jun 1913
James B. Houser, Acting	18 Jul 1921
James B. Houser	15 Nov 1921
Dorsie C. Upton	28 Apr 1930
Elliott E. McDowell, Acting	14 May 1934
John W. Mosteller, Acting	27 Sep 1934
John W. Mosteller	16 Jan 1935
Alfonso Beam, Acting	30 Apr 1951
Raleigh J. Putman	27 Mar 1952
Max G. Beam	9 Jan 1982
Frank M. Guida Jr. Officer-In-Charge	30 Aug 1988
Mrs. Sharon Carpenter Officer-In-Charge	2 Nov 1988
Ronald L. Denlinger	19 Nov 1988
Jonathan C. Kinlaw	26 Jun 2004
Eddie L. Canady Officer-In-Charge	22 May 2006
Ivy D. Mitchell Officer-In-Charge	5 Sep 2006
Catherine M. Brock	3 Feb 2007
Catherine M. Griffin (marriage)	7 Feb 2008



Type 2
27.5 mm Black
18 May 1885



Type 3
28 mm Black
10 Feb 1894
20 Feb 1895



Type 4
29 mm Black
24 Apr 1899
17 Jul 1906



Type 5
30.5 mm Black
24 Nov 1906
16 Jul 1907



Type 6
31.5 mm Black
1906 Type A/1 4-Bar
11 Dec 1907
25 Aug 1909



Type 7
31.5 mm Black
1906 Type A/1 4-Bar
3 Aug 1910
19 Jun 1912

GASTON COUNTY

Cherryville (Cont.)

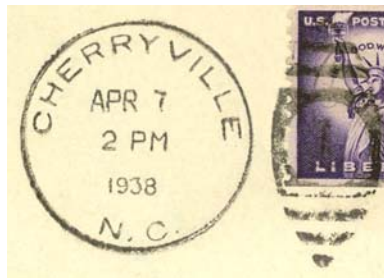
(Gaston)



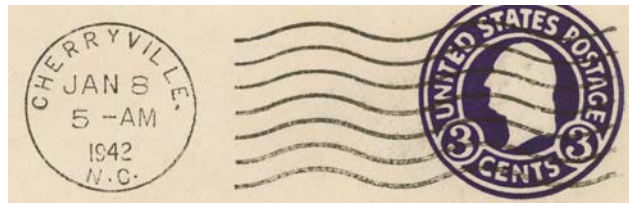
Type 8
30.5 mm Black
Metal Duplex Type H2
22 Jan 1913
13 Dec 1919



Type 9
29.5 mm Black
Metal Duplex Type H2
12 Feb 1932



Type 10
30.5 mm Black
Metal Duplex Type E2
12 Oct 1937
26 Oct 1951



Type 11
22.5 mm Black
International Machine
Type AT/S 2721
9 Sep 1940
2 Jun 1952



Type 12
21 mm Black
Universal Machine
Type DT 300
5 Nov 1952
28 Jan 1963

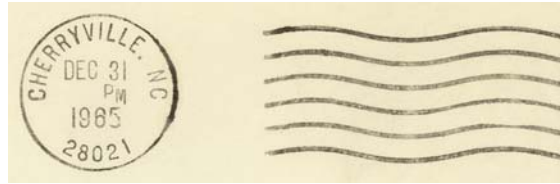


Type 13
30.5 mm Magenta
12 Jul 1955

GASTON COUNTY

Cherryville (Cont.)

(Gaston)



Type 14
21 mm Black
Universal Machine
Type DTSz 300 (28021)
2 Aug 1967
22 Dec 1976



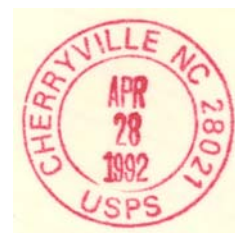
Type 15
33 mm Black
1963 Type F/2 4-Bar (28021)
16 Mar 1971



Type 16
33 mm Black
1963 Type F/2 4-Bar (28021)
4 Jan 1977
33 mm Magenta
10 May 1983



Type 17
29.5 mm Magenta
7 Jan 1985

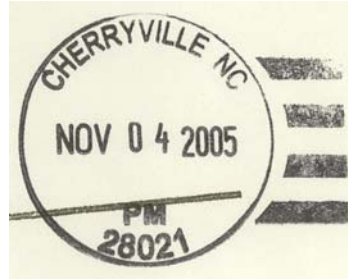


Type 18
27.5 mm Red
Self-Inking Postmarker (28021)
28 Apr 1992

GASTON COUNTY

Cherryville (Cont.)

(Gaston)



Type 19
33.5 mm Black
4 Nov 2005

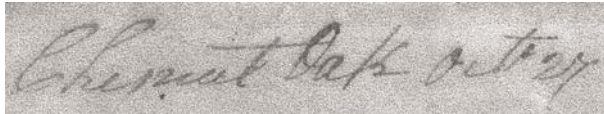


Type 20
41.5 x 35.5 mm Red
Self-Inking Postmarker (28021)
12 Sep 2006

Chesnut Oak

(Gaston)

James M. Hanna	9 Nov 1859
J. M. Hanna, CSA	4 Jul 1861
CSA office closed on or before	30 Apr 1865
Federal office discontinued	6 Dec 1866



Manuscript
27 Oct 196x

GASTON COUNTY

Costner, moved from High Shoals (2)

(Gaston)

Eli S. Costner	19 Mar 1891
Sudie Friday	24 Oct 1895
Ethel L. Rhyne	21 Jan 1898
Mandy Paysour	14 Dec 1899
Mary C. Rhyne	9 May 1901
Discontinued	15 Nov 1902
Papers to Worth	

*Costner, H.B.
8.26.97*

Manuscript
26 Aug 1897

Craigsville

(Gaston)

William O. Harrelson	23 Jun 1859
W. O. Harrelson, CSA	15 Jul 1861
CSA office closed on or before	30 Apr 1865
Federal office discontinued	10 Jun 1867
Ann I. Craft	19 Nov 1867
Cynthia V. Carpenter	23 Feb 1871
Discontinued	30 Sep 1872

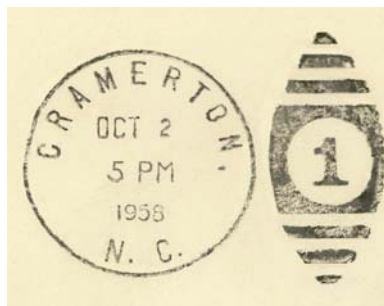
Cramerton, name changed from Mayesworth

(Gaston)

Hugh L. Moore	6 Dec 1920
James A. Leeper, Acting	18 Jan 1922
James A. Leeper	9 Feb 1922
Ike R. Forbes	3 Mar 1925
W. Reid Howe, Acting	8 Oct 1936
W. Reid Howe	23 Jul 1937
Robert Franklin Ford, Acting	13 Feb 1943
W. Reid Howe	30 Sep 1945
Russell R. Conard	6 Mar 1971
Barbara Reid Officer-In-Charge	1 Aug 1989
James L. Glass	7 Oct 1989
Gaynelle McSorley Officer-In-Charge	16 Nov 1992
Kenneth R. Click	6 Jul 1996
George A. Payne	21 Oct 2000
John A. Frye Officer-In-Charge	27 Apr 2001
Barry W. Denton	20 Apr 2002
Doris Blair Officer-In-Charge	1 Aug 2005
Jammie Spearman Officer-In-Charge	1 Feb 2006
Robin C. Ratchford Officer-In-Charge	26 Apr 2006
Angela M. Greene	20 Jan 2007



Type 1
29 mm Black
14 Apr 1935



Type 2
30.5 mm Black
Metal Duplex Type E2
28 Jun 1937
2 Oct 1958

GASTON COUNTY

Cramerton (Cont.)

(Gaston)



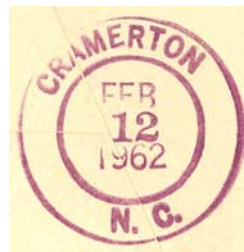
Type 3
22.5 mm Black
Columbia Machine
Type G 1W
17 Mar 1926



Type 4
22.5 mm Black
International Machine
Type AR/S 2722
18 Aug 1939
8 Jun 1959



Type 5
21 mm Black
Universal Machine
Type DT 400
(Pray/For/Peace)
6 Oct 1961
16 May 1966



Type 6
30 mm Magenta
12 Feb 1962



Type 7
20.5 mm Black
Universal Machine
Type DTSz 400 (28032)
(Pray/For/Peace)
8 Dec 1967
2 May 1997



Type 8
33 mm Black
1963 Type F/2 4-Bar (28032)
29 Sep 1975
9 Nov 1975

GASTON COUNTY

Cramerton (Cont.)

(Gaston)



Type 9
31 mm Black
Self-Inking Postmarker
Type 2B (28032)
25 Jun 1990
26 Oct 1993



Type 10
29 mm Red
Self-Inking Postmarker (28032)
12 May 1999



Type 11
35 mm Black
Self-Inking Postmarker (28032)
5 Jun 2000

Station Cancels
West Cramerton Station



Type 1
31.5 mm Black
24 Aug 1950
6 May 1953



Type 2
34 mm Black
5 Feb 1957
10 Dec 1962

GASTON COUNTY

Cramerton (Cont.)

(Gaston)

M.O.B.
(Money Order Business)



Type 1
28 mm Magenta
20 Jan 1942

Crowder's Creek, from Lincoln County

(Gaston)

Lawson Wilson	21 Dec 1846
Lawson Wilson, CSA	6 Jul 1861
CSA office closed on or before	30 Apr 1865
Federal office discontinued	6 Dec 1866
Charles Q. Petty	23 Feb 1874
William D. Glenn	12 Jun 1876
Benjamin M. Johnson	28 Feb 1905
Brady L. Forbes	16 Dec 1905
Discontinued	15 Oct 1907
Mail to Gastonia	

Crowders Creek

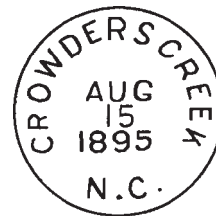
Manuscript
13 Mar 1857

*Free
L. W. Wilson P.M.*

Postmaster Frank
13 Mar 1857

*Crowders Creek NC
8/6/92*

Manuscript
6 Aug 1892



Type 1
28 mm Black
15 Aug 1895
4 Feb 1899



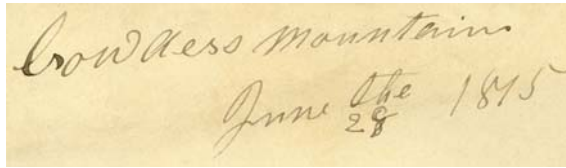
Type 2
28.5 mm Black
Doane Type 2-?
20 Jun 1904

GASTON COUNTY

Crowder's Mountain

(Gaston)

John R. Oats	16 Aug 1852
James B. Oats	10 Jun 1856
J. B. Oats, CSA	6 Nov 1861
James McNair, CSA	Bibliog. #19
CSA office closed on or before	30 Apr 1865
Nancy M. Carson	8 Mar 1866
John R. Carson	20 Oct 1873
Enos M. Berry	10 Apr 1886
Discontinued	19 Oct 1887
Papers to Dallas	

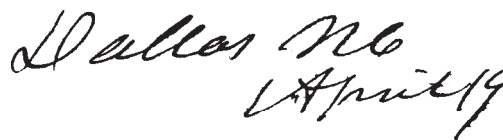


Manuscript
28 Jun 1875

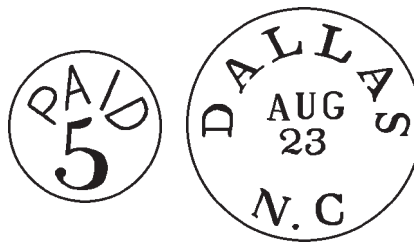
Dallas, name changed from Hoylesville

(Gaston)

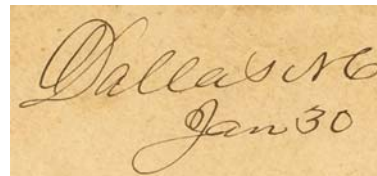
Andrew Hoyle	6 Mar 1848
Winchester Pegram	2 Mar 1857
Jacob F. Pegram	15 Jun 1858
J. F. Pegram, CSA	Bibliog. #19
CSA office closed on or before	30 Apr 1865
Violet S. Tromberger	4 Sep 1865
Elizabeth C. Morris	21 Nov 1866
Eli Pasour	4 Aug 1868
Catherine Pasour	23 Nov 1880
Mrs. S. A. Moore	24 Jul 1885
Eli Pasour	5 Apr 1889
Sarah A. Moore	4 Sep 1893
Nellie I. Moore	4 Dec 1894
George R. Rawlings	25 Nov 1898
Peter M. Rhyne	13 Oct 1902
John P. Hoffman	28 Jan 1907
Robert S. Lewis	14 Apr 1914
Will C. Hoffman	9 Nov 1921
Alethio Pasour, Acting	9 Nov 1925
Suadan V. Rhyne	14 Apr 1926
John P. Hoffman, Acting	20 Jan 1931
John P. Hoffman	18 Jan 1932
Grady L. Friday, Acting	29 Feb 1936
Grady L. Friday	27 Mar 1936
Clyde D. Stowe, Jr., Acting	31 Mar 1952
Charles F. Beam, Acting	15 May 1953
Jay T. Baker, Acting	7 Feb 1958
Clyde D. Stowe, Jr., Acting	3 Feb 1961
J. Eugene Taylor Officer-In-Charge	26 Dec 1980
William L. Jackson	22 Aug 1981
Debra S. Moss Officer-In-Charge	14 Nov 1990
Debra S. Moss	27 Jun 1992
Sharon Carpenter Officer-In-Charge	1 Dec 1995
Danny Parker Officer-In-Charge	4 Mar 1996
David Willis Officer-In-Charge	6 May 1996
Clarence E. Drake	6 Jul 1996
Mark Anthony Officer-In-Charge	5 Dec 1996
Wayne R. Dunn	1 Mar 1997
John Geter Officer-In-Charge	8 Apr 1998
Morris Teeter Officer-In-Charge	5 Jan 1999
Walt Surigao Officer-In-Charge	21 Apr 1999



Manuscript
12 Jul 1848
21 Feb 1849



Type 1
31 mm Black
9 Aug 1856
23 Aug 1862



Manuscript
14 Dec 1866
9 Aug 1879



Type 2
32 mm Blue
20 Dec 1880
8 May 1882



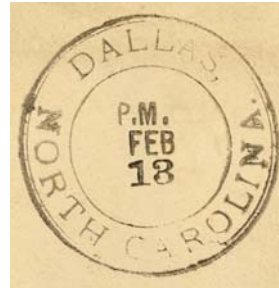
Type 3
34 mm Black
16 Sep 1882
9 Aug 1884

GASTON COUNTY

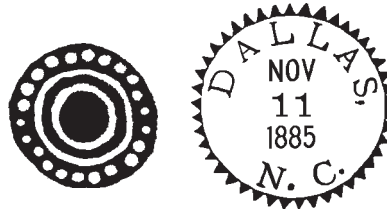
Dallas (Cont.)

(Gaston)

James W. Walsh 28 Aug 1999
 Alvin Godwin Officer-In-Charge 22 Feb 2001
 Prince Reed Jr. 5 May 2001
 Catherine Latta Officer-In-Charge 17 Nov 2005



Type 3a
 34 mm Black
 (No year and PM substituted)
 18 Feb 188x



Type 4
 27 mm Black
 11 Nov 1885



Type 5
 27.5 mm Black
 17 Mar 1887
 7 Sep 1888



Type 6
 29 mm Black
 Metal Duplex Type H2
 13 Feb 1894
 14 Apr 1913



Type 7
 31.5 mm Black
 1908 Type A/2 4-Bar
 25 May 1914
 10 Dec 1915

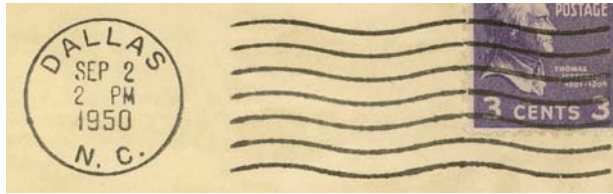


Type 8
 30.5 mm Black
 Metal Duplex Type H2
 17 Aug 1926
 15 May 1938

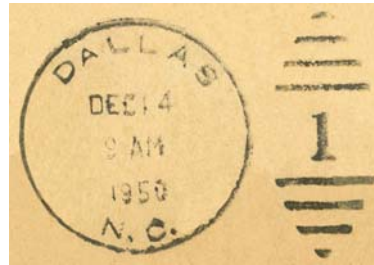
GASTON COUNTY

Dallas (Cont.)

(Gaston)



Type 9
21 mm Black
Universal Machine
Type DT 200
2 Sep 1950
18 Aug 1965



Type 10
30.5 mm Black
Metal Duplex Type ?
14 Dec 1950



Type 11
29.5 mm Magenta
19 Sep 1958



Type 12
21.5 mm Black
Universal Machine
Type DTSz 300 (28034)
22 Aug 1966
3 Apr 1979

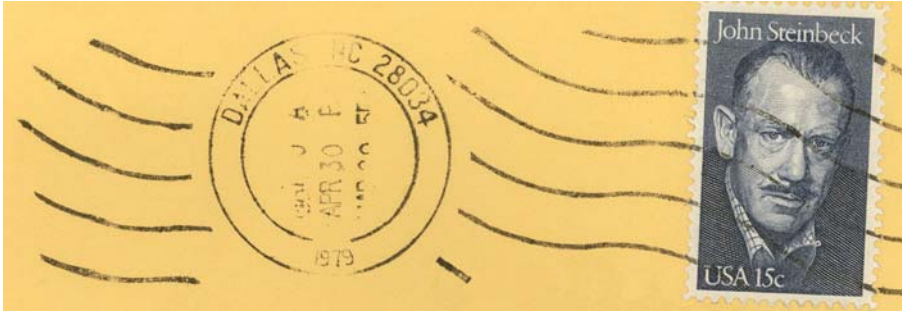


Type 13
33.5 mm Black
1963 Type F/2 4-Bar (28034)
2 Dec 1966

GASTON COUNTY

Dallas (Cont.)

(Gaston)



Type 14
32 mm Black
Hanley hand-held roller (28034)
30 Apr 1979



Type 15
28.5 mm Red
Self-Inking Postmarker (28034)
13 May 1988
28 Oct 1992



Type 16
37.5 mm Red
Self-Inking Postmarker (28034)
27 Feb 2004
19 Oct 2006

Receiving datestamp



Type R1
29.5 mm Black
12 Dec 1907
19 Feb 1910



Type R2
33.5 mm Magenta
27 Apr 1973

GASTON COUNTY

Dallas (Cont.)

(Gaston)

Registered



Type 1
28 mm Red
18 Jan 1947

Erasmus, from Lincoln County

(Gaston)

Isom Ford	21 Dec 1846
Washington F. Holland	2 Dec 1851
Manuel Ford	17 Feb 1852
No record of CSA operation	
Discontinued	10 Jun 1867

GASTON COUNTY

Falls, from Lincoln County

(Gaston)

John Falls	21 Dec 1846
Discontinued	17 Feb 1852

Forney's, from Lincoln County

(Gaston)

Andrew Carpenter	21 Dec 1846
Name changed to Castania Grove	1 Aug 1855

Garibaldi

(Gaston)

Alexander Beaty	17 Mar 1874
Abram Stowe	17 Nov 1874
Discontinued	11 Jan 1876
Abram Stowe	8 Feb 1876
Samuel T. Stowe	16 Jan 1883
Sarah J. McKee	26 Feb 1883
John N. Mellon	28 Jul 1885
Name changed to Belmont	8 May 1886



Type 1
27 mm Black
31 Oct 1885

Gastonia

(Gaston)

Franklin S. Hanna	24 Oct 1873
Robert M. Martin	25 Nov 1881
B. G. Bradley	3 Jul 1883
J. H. Fayssoux	12 Nov 1885
James E. Page	19 Apr 1887
Laban L. Jenkins	3 Jun 1889
William L. Marshall	5 Apr 1893
Laban L. Jenkins	4 Jul 1898
Claudius D. Holland	23 Jun 1903
Benjamin G. Bradley	19 Feb 1906
E. Grant Pasour	13 Jun 1910
John R. Rankin	26 May 1914
James W. Atkins, Acting	1 Mar 1920
Stephen B. Dolley, Acting	1 May 1920
Francis A. Slate	9 Nov 1921
Romeo H. Long, Acting	1 Jun 1925
Roger P. Washam	6 May 1926
William T. Webster, Acting	24 Feb 1933



Type 1
25 mm Black
28 Aug 187x



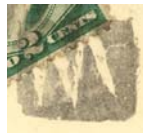
Type 2
32 mm Black
(R.M. Martin P.M.)
3 Jun 1882
14 Apr 1883

GASTON COUNTY

Gastonia (Cont.)

(Gaston)

Miles A. Carpenter, Acting	19 Apr 1933
Clarence W. Boshamer, Acting	28 Dec 1933
Clarence W. Boshamer	1 Feb 1934
Willifred M. Farris	30 Jun 1963
Joseph A. Allen, Acting	29 Dec 1967
Joseph A. Allen	4 Apr 1968
James O. Beard Jr. Officer-In-Charge	31 Oct 1976
Walter T. Burgoyne Officer-In-Charge	9 Dec 1976
John E. Janson Officer-In-Charge	24 Feb 1977
Conrad C. Helms Jr.	4 Jun 1977
Don J. Cowan Officer-In-Charge	5 Oct 1981
Joseph R. Elmore Jr.	26 Feb 1982
John R. Moore Officer-In-Charge	19 Jul 1982
Thomas E. Conder Officer-In-Charge	14 Jan 1983
Jack B. Izlar Jr. Officer-In-Charge	25 Jun 1983
Roger Clark Rule	17 Sep 1983
Robert J. Walker Officer-In-Charge	27 Mar 1987
John R. Moore	18 Jul 1987
Donald Amos Cooper Officer-In-Charge	
Curtis R. Mays	6 Aug 1994
Curtis Morehead III Officer-In-Charge	
Wayne R. Dunn	28 Aug 1999
Brian M. Forte Officer-In-Charge	22 Aug 2008



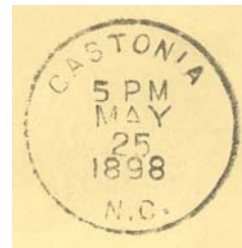
Type 3
27 mm Black
24 Apr 1885
28 Sep 1889



Type 4
28 mm Black
27 Jun 1891
11 Dec 1891



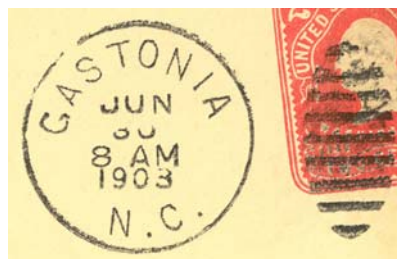
Type 5
29 mm Black
6 Feb 1893
25 Nov 1895



Type 6
28 mm Black
23 Feb 1897
29 May 1898



Type 7
28.5 mm Black
Metal Duplex Type H2
14 Mar 1899
14 Mar 1901



Type 8
30.5 mm Black
Metal Duplex Type H2
30 Jun 1903
26 Apr 1906

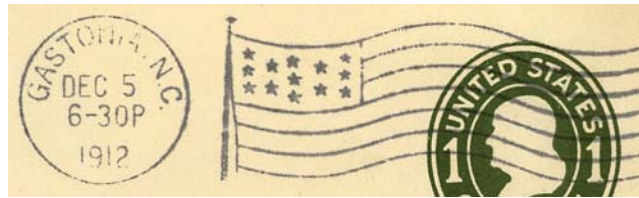
GASTON COUNTY

Gastonia (Cont.)

(Gaston)



Type 9
26 mm Black
Metal Duplex Type E2
23 Feb 1907
5 Jan 1915



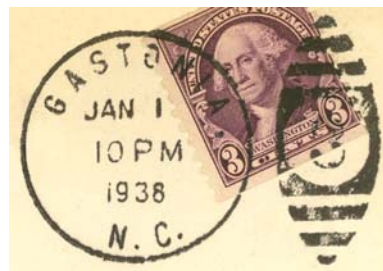
Type 10
22.5 mm Black
American Machine
Type A14
3 Jan 1912
24 Sep 1919



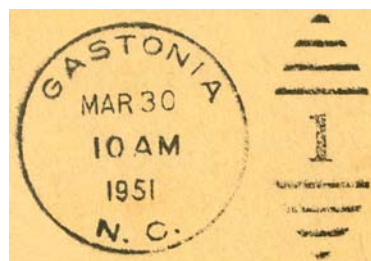
Type 11
20.5 mm Black
Universal Machine
Type DT 300
(Narrow N.C.)
18 Jan 1922
7 Oct 1930



Type 12
20.5 mm Black
Universal Machine
Type DT 300
(Wide N.C.)
1 Nov 1932
10 Nov 1951



Type 13
30.5 mm Black
Metal Duplex Type E2
12 Oct 1937
1 Jan 1938



Type 14
30.5 mm Black
Metal Duplex Type ?
30 Mar 1951
30 Oct 1952

GASTON COUNTY

Gastonia (Cont.)

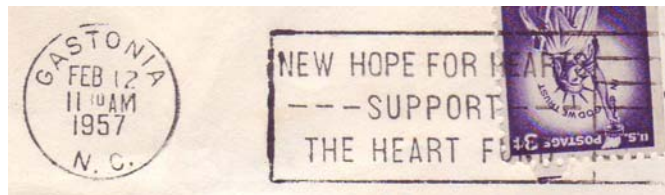
(Gaston)



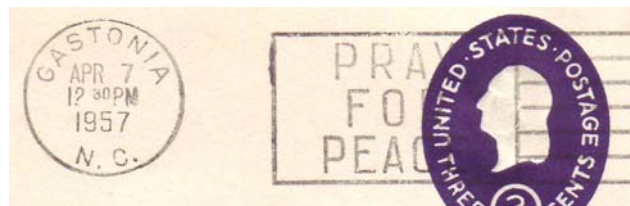
Type 15
30.5 mm Magenta
27 Apr 1953
25 May 1957



Type 16
21 mm Black
Universal Machine
Type DT 300
21 Jan 1954
25 Jan 1955



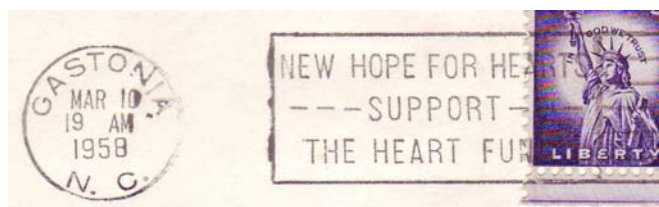
Type 17
20.5 mm Black
Universal Machine
Type DT 400
(New Hope For Hearts/
Support/The Heart Find)
13 Feb 1956
12 Feb 1957



Type 18
21 mm Black
Universal Machine
Type DT 400 (Pray/For/Peace)
1 Mar 1957
1 Jan 1958



Type 19
35.5 mm Black
5 Aug 1957

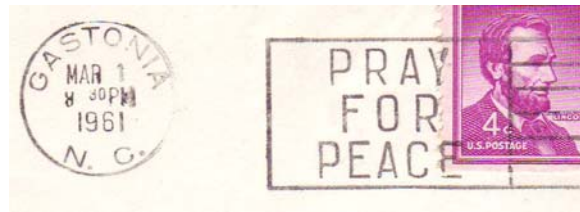


Type 20
20.5 mm Black
Universal Machine
Type DT 400 (Wide N.C.)
(New Hope For Hearts/
Support/The Heart Find)
10 Mar 1958

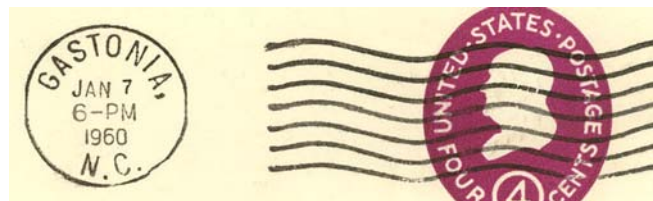
GASTON COUNTY

Gastonia (Cont.)

(Gaston)



Type 21
 20.5 mm Black
 Universal Machine
 Type DT 400 (Pray/For/Peace)
 (Wide N.C.)
 15 Apr 1958
 20 Feb 1965



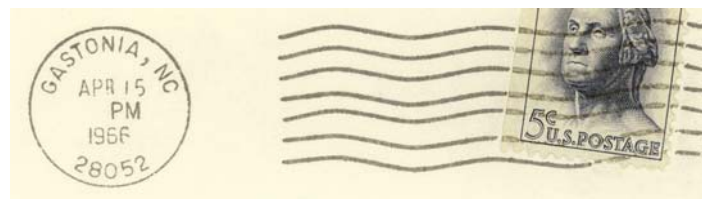
Type 22
 21.5 mm Black
 International Machine
 Type J30
 29 Nov 1958
 6 Dec 1965



Type 23
 21.5 mm Black
 International Machine
 Type J 400 (Pray/For/Peace)
 23 May 1961
 24 Apr 1962



Type 24
 31.5 mm Black
 Handley hand-held roller
 14 Aug 1961



Type 25
 21 mm Black
 International Machine
 Type Hz30 (28052)
 16 Apr 1966
 24 May 1970

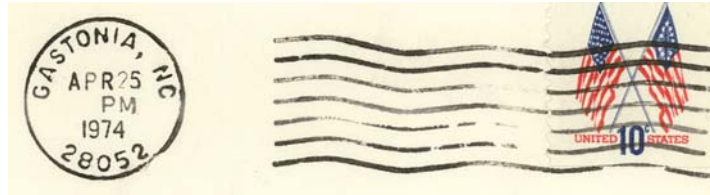


Type 26
 21.5 mm Black
 International Machine
 Type J30
 2 Feb 1968
 15 Feb 1968

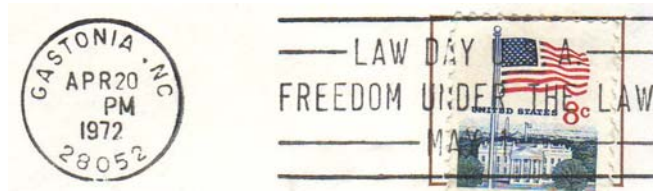
GASTON COUNTY

Gastonia (Cont.)

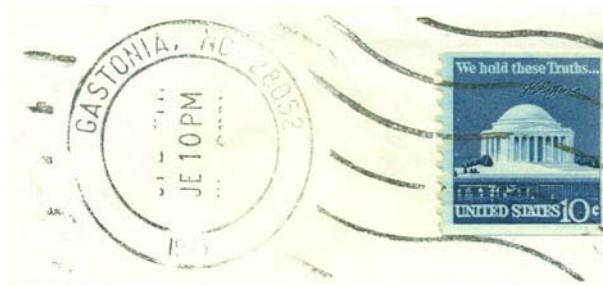
(Gaston)



Type 27
21 mm Black
International Machine
(Wider space to N.C.)
Type Hz30 (28052)
1 Mar 1969
4 Mar 1976



Type 28
21.5 mm Black
International Machine
Type Hz 400 (28052)
(Law Day U.S.A./Freedom
Under The Law/May 1)
4 Apr 1970
14 Apr 1973



Type 29
32.5 mm Black
Handley hand-held roller (28052)
25 Jan 1971
10 Jun 1975



Type 30
30 mm Magenta
6 Aug 1974



Type 31
28 mm Magenta
10 Apr 1981



Type 32
28.5 mm Red
27 Aug 1992

GASTON COUNTY

Gastonia (Cont.)

(Gaston)



Type 33
23.5 mm Black
Universal Machine
Type BTSz 200 (28052)
5 Dec 1992



Type 34
35 mm Black
Self-Inking Postmarker (28052)
27 Sep 2004



Type 35
44.5 mm Black
Self-Inking Postmarker
(28052-9998)
10 Jan 2007
9 Apr 2007

Station Cancels

Akers Center Station



Type 1
30 mm Black
19 Jul 1957



Type 2
33 mm Black
31 Aug 1957
25 Apr 1960

GASTON COUNTY

Gastonia (Cont.)

(Gaston)

Station Cancels (Cont.)

Akers Center Station (Cont.)



Type 3
28 mm Red
2 Nov 1961

28 mm Magenta
8 Nov 1971
27 Jun 1972



Type 4
29 mm Magenta
21 May 1970

Carver Station



Type 1
29 mm Black
3 Nov 1942



Type 2
30.5 mm Magenta
31 May 1951

Dixie Village Contract Station



Type 1
28.5 mm Red
Self-Inking Postmarker
7 Nov 1996
10 Feb 1997

GASTON COUNTY

Gastonia (Cont.)

(Gaston)

Station Cancels (Cont.)

Finance Station No. 1



Type 1
29.5 mm Magenta
27 Feb 1985
15 Dec 1987



Type 2
30 mm Magenta
26 May 1994

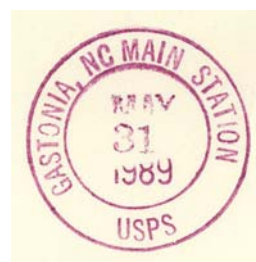
30 mm Red
21 Oct 1996
11 Mar 1997

Highland Station



Type 1
30.5 mm Black
Metal Duplex Type E2
11 Feb 1937
7 May 1937

Main Station



Type 1
29.5 mm Magenta
31 May 1989



Type 2
29 mm Magenta
12 Nov 1990
11 Feb 1993

GASTON COUNTY

Gastonia (Cont.)

(Gaston)

Station Cancels (Cont.)

Main Station (Cont.)



Type 3
32 mm Red
28 Apr 1994

New Hope/New Hope Annex Station



Type 1
29 mm Magenta
1 Nov 1996

29 mm Black
23 Dec 1996



Type 2
35.5 mm Black
Self-Inking Postmarker (28054)
23 Feb 2007

Ranlo-Smyre Station



Type 1
30 mm Magenta
30 Mar 1972
17 May 1975



Type 2
28 mm Magenta
28 Apr 1978
7 Dec 1978

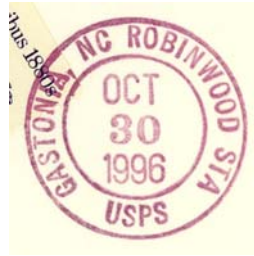
GASTON COUNTY

Gastonia (Cont.)

(Gaston)

Station Cancels (Cont.)

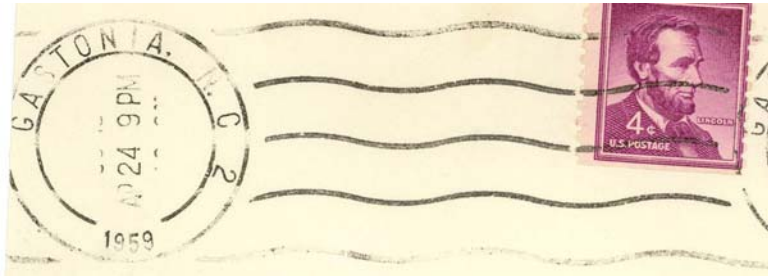
Robinwood Station



Type 1
29.5 mm Magenta
30 Oct 1996
31 Jan 1997

29.5 mm Black
11 Dec 1997
17 Mar 2007

Station No. 2



Type 1
32 mm Black
Handley hand-held roller
24 Apr 1959

West Gastonia Station



Type 1
25.5 mm Black
Metal Duplex Type E2
9 Jan 1939
30 Mar 1951



Type 2
30 mm Magenta
27 Sep 1958



Type 3
30.5 mm Magenta
5 Jun 1970
4 Nov 1982

GASTON COUNTY

Gastonia (Cont.)

(Gaston)

Station Cancels (Cont.)

West Gastonia Station (Cont.)



Type 4
28 mm Magenta
22 Jan 1973

West Station



Type 1
29.5 mm Magenta
20 Mar 1985

29.5 mm Red
5 Mar 1992
22 Aug 1992

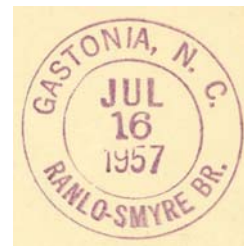


Type 2
30 mm Black
Self-Inking Postmarker
(28052-9998)
23 Jul 2003

Branch Station Cancels

Ranlo-Smyre Branch

16 Jul 1957



Type 1
29 mm Magenta
16 Jul 1957
3 Feb 1967



Type 2
33 mm Magenta
16 Jul 1957

GASTON COUNTY

Gastonia (Cont.)

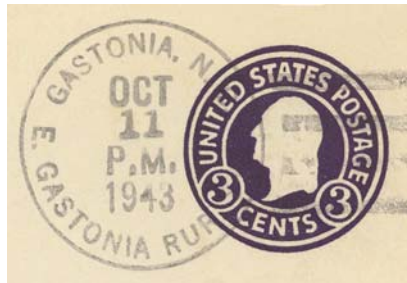
(Gaston)

Rural Station Cancels

East Gastonia Rural Station
16 Jul 1922
18 Jun 1977



Type 1
34 mm Black
7 Apr 1936



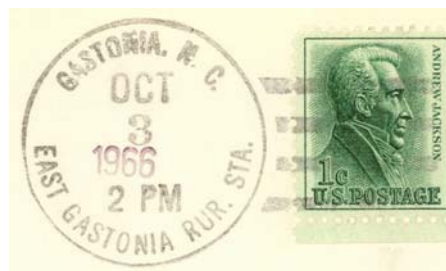
Type 2
32.5 mm Black
11 Oct 1943



Type 3
42 mm Black
194x



Type 4
32.5 mm Black
10 Nov 1951



Type 5
32.5 mm Black
4 Jun 1958
4 Jan 1973

GASTON COUNTY

Gastonia (Cont.)

(Gaston)

Rural Station Cancels

East Gastonia Rural Station (Cont.)



Type 6
28.5 mm Magenta
24 Apr 1970

Highland Rural Station
Oct 1927
15 Sep 1934

Loray Rural Station
1 Jun 1909
15 Jun 1909

Loray Mills Rural Station
26 Nov 1909
30 Sep 1920

Pickney Rural Station
1 Jul 1920
9 Oct 1979



Type 1
32.5 mm Black
8 Oct 194x

GASTON COUNTY

Gastonia (Cont.)

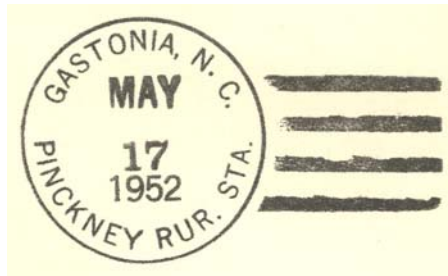
(Gaston)

Rural Station Cancels

Pickney Rural Station (Cont.)



Type 2
33 mm Black
2 Dec 1940
1 May 1941



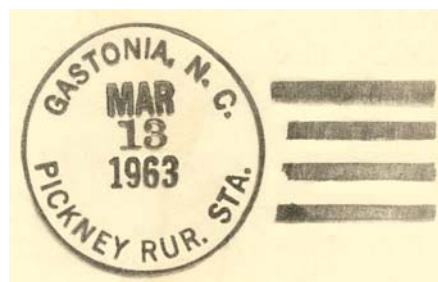
Type 3
32.5 mm Black
17 May 1952
29 Sep 1955



Type 4
33.5 mm Black
4 Oct 1956
26 Aug 1957



Type 5
30 mm Magenta
26 Sep 1958



Type 6
32.5 mm Black
11 Sep 1961
24 Jun 1964

GASTON COUNTY

Gastonia (Cont.)

(Gaston)

Rural Station Cancels

Pickney Rural Station (Cont.)



Type 7
28 mm Black
11 Sep 1961
26 Apr 1976



Type 8
28 mm Magenta
12 Jan 1973
22 Nov 1978

28 mm Purple
28 May 1979

Ranlo Rural Station

Jul 1924

15 Jul 1957



Type 1
32 mm Black
17 Nov 1933



Type 2
32 mm Black
1 Aug 1951
9 Jul 1957

Smyre Rural Station

16 May 1925

15 Jul 1957



Type 1
32 mm Black
3 Apr 1936
13 Jun 1940

GASTON COUNTY

Gastonia (Cont.)

(Gaston)

Rural Station Cancels

Smyre Rural Station (Cont.)



Type 2
33 mm Black
6 Nov 1947



Type 3
33 mm Black
13 Jul 1951



Type 4
33.5 mm Magenta
29 Jun 1957



M.O.B.
(Money Order Business)

Type 1
29 mm Magenta
30 Jun 1957

Victoria Rural Station
by 24 Feb 1924
1 Oct 1955



Type 1
33.5 mm Black
15 Dec 1947
30 Sep 1948

GASTON COUNTY

Gastonia (Cont.)

(Gaston)

Rural Station Cancels

Victoria Rural Station (Cont.)



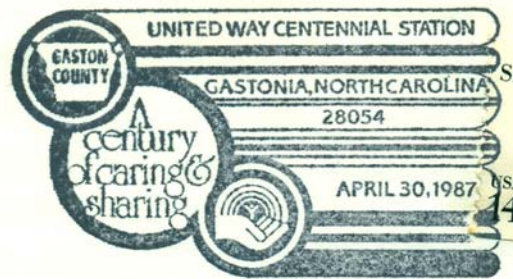
Type 2
34.5 mm Black
23 Aug 1950
20 Apr 1951



Registered
Type 1
28.5 mm Magenta
24 Feb 1924

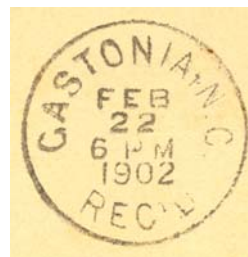
Temporary Station Cancels

United Way Centennial Station



Type 1
64.5 x 35.5 mm Black
30 Apr 1987

Receiving datestamp



Type 1
29.5 mm Black
22 Feb 1902

Registered



Type 1
28.5 mm Magenta
13 Sep 1946

GASTON COUNTY

Gastonia (Cont.)

(Gaston)

General Delivery



Type 1
28.5 mm Magenta
29 Mar 1927



Type 2
29 mm Magenta
11 Mar 1947

M.O.B.
(Money Order Business)



Type 1
29 mm Magenta
20 Sep 1927

Third Class Cancelers



Type 1
36 x 18 mm Black
191x



Type 2
60 x 19 mm Black (3)
194x

GASTON COUNTY

Gould

(Gaston)

Robert W. Love	26 Jun 1888
Sarah E. Wood	14 May 1894
Discontinued	15 Aug 1902
Papers to Kings Mountain	

Harden

(Gaston)

Oscar D. Carpenter	12 Jul 1881
William F. Huggins	25 May 1900
Luther D. Black	17 Apr 1901
M. E. Plonk	26 Dec 1901
Order rescinded	20 Dec 1902
Luther D. Black continued	20 Dec 1902
Discontinued	28 Feb 1903
Papers to Highshoals	



Type 1
29 mm Magenta
12 Feb 1898



Type 2
27.5 mm Black
9 Nov 1891

Hickory Grove

(Gaston)

Marcus A. Aderhold	5 Aug 1873
Discontinued	17 Apr 1874

Highshoals, High Shoals (3)

(Gaston)

Eliza Wilkes	21 Apr 1868
Daniel Thornburg	23 Oct 1874
Moved to Costner	19 Mar 1891
James W. Tribble	3 Aug 1900
Travis N. Harris	21 Jun 1902
James C. McBrayer	10 Mar 1906
Judson C. Dew	27 May 1907
Folsom E. Clinton	31 Aug 1907
Hattie L. Williams	30 Jan 1908
Lawson R. Teal	19 Apr 1912
John W. Daniel	16 Apr 1919
Annie L. Teal	25 Feb 1920
John W. McDaniel	23 Mar 1923



Type 1
28.5 mm Black
Doane Type 2-5
4 Jun 1905
26 Jan 1906

GASTON COUNTY

Highshoals, High Shoals (3) (Cont.)

(Gaston)

John G. Charity, Acting	30 Dec 1927
John G. Charity	5 Apr 1928
Elsie Martha Vannoy, Acting	22 Nov 1928
Elsie Martha Vannoy	18 Mar 1929
Elsie M. Pearsey (marriage)	8 Oct 1932
Clarence F. Kanipe, Acting	6 Jun 1935
Clarence F. Kanipe	25 Oct 1935
Anne Lee Vannoy, Acting	16 Nov 1939
Anne Lee Vannoy	2 Jul 1940
Anne V. Payseur (marriage)	1 Sep 1945
Spelling changed to High Shoals	1 Mar 1968
Anne V. Payseur	1 Mar 1968
James C. Garver	17 Feb 1973
Cathy Biggs Officer-In-Charge	18 May 1990
Nellie Drennan Officer-In-Charge	31 May 1990
Stephens P. Withers	11 Aug 1990
Darlene Cloer Officer-In-Charge	27 Apr 2006
Wanda L. Sanders	18 Aug 2007

*Note: High Shoals (1) operated in Rutherford County 1828-1844
High Shoals (2) Listed in Rutherford County in error*



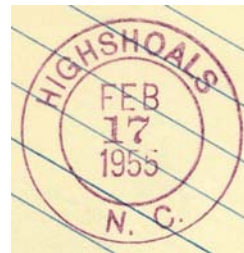
Type 2
32.5 mm Black
1908 Type A/2 4-Bar
30 Sep 1918



Type 3
32.5 mm Black
1936 Type F/1 4-Bar
29 Jan 1943



Type 4
30.5 mm Black
Metal Duplex Type ?
21 Jun 1951
10 Jan 1962



Type 5
29.5 mm Magenta
17 Feb 1955

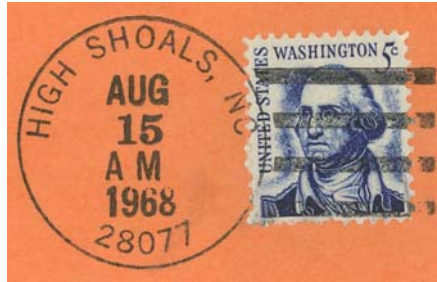


Type 6
33 mm Black
1963 Type F/2 4-Bar (28077)
13 May 1966
9 Feb 1968

GASTON COUNTY

Highshoals, High Shoals (3) (Cont.)

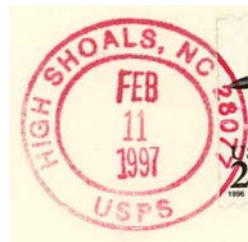
(Gaston)



Type 7
33 mm Black
1963 Type F/2 4-Bar (28077)
1 Mar 1968
2 Mar 1989



Type 8
34.5 mm Black
Self-Inking Postmarker
Type 3A (28077)
24 Jun 1991
22 Jun 1993



Type 9
29 mm Red
Self-Inking Postmarker (28077)
11 Feb 1997



Type 10
30.5 mm Red
Self-Inking Postmarker (28077)
27 Sep 2004
9 Aug 2005

Hoyleville, from Lincoln County

(Gaston)

Andrew Hoyle 21 Dec 1846
Name changed to **Dallas** 6 Mar 1848

GASTON COUNTY

Kings Mountain, from Lincoln County

(Gaston)

Hiram A. Lowrance	21 Dec 1846
Benjamin F. Briggs	5 Jun 1851
William Falls, CSA	15 Aug 1861
CSA site change to Cleveland County	16 Sep 1861
Re-established in Gaston County	
William Falls	28 Feb 1866
Miss L. A. Black	15 May 1867
Discontinued	31 Aug 1868
Thomas A. Ware	11 Mar 1870
Moved to Cleveland County	10 Oct 1873

Long Creek Shoals, from Lincoln County

(Gaston)

Levi Clemmer	26 Jun 1846
Discontinued	28 Jun 1849

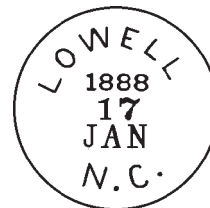
Lowell, name changed from Pin Hook Depot

(Gaston)

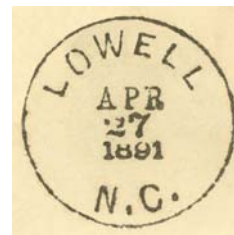
N. Dumont	23 Oct 1879	
Benjamin F. Lenhardt	2 May 1883	
N. Dumont	3 Jun 1884	
Caleb M. Nolen	1 Oct 1884	
J. D. Ragan	27 Mar 1886	
James W. Abernethy	5 Apr 1889	
Jefferson D. Ragan	18 Jul 1893	
Rufus P. Rankin	5 Dec 1895	
Martin A. Teague	27 Dec 1899	
Thomas P. Rankin	4 May 1914	
Abram W. Titman	5 Jan 1922	
John M. Gaston, Acting	21 Feb 1934	
Carl H. Hand	18 Jun 1934	
Mary R. Titman, Acting	31 Jul 1954	
Mary R. Titman	6 Sep 1957	
Wilson L. Bradley Jr. Officer-In-Charge	30 Jun 1972	
Wilson L. Bradley Jr.	25 Nov 1972	
Edward Murphy Officer-In-Charge	7 Jan 1983	
Charles R. Lowery	14 May 1983	
Jeanette Beam Officer-In-Charge	28 Sep 1992	
Steven P. Withers Officer-In-Charge	8 Feb 1993	
Theodore Klopfer	20 Feb 1993	
John S. McKenzie Officer-In-Charge		
John S. McKenzie	11 Oct 1997	
Angela Greene Officer-In-Charge	11 Feb 2004	
Paul S. Williams	10 Jul 2004	

*Lowell NC
May 20 88*

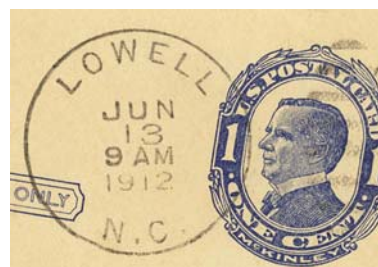
Manuscript
20 May 1880



Type 1
27 mm Black
17 Jan 1888



Type 2
28 mm Black
27 Apr 1891
3 Aug 1909



Type 3
30 mm Black
Metal Duplex Type H2
13 Jun 1912

GASTON COUNTY

Lowell (Cont.)

(Gaston)



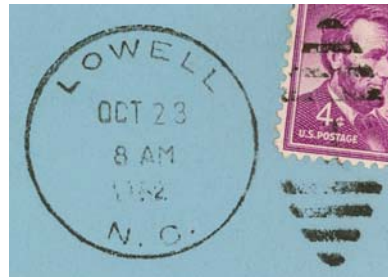
Type 4
22 mm Black
Columbia Machine
Type G 2W
4 Nov 1920
12 May 1932



Type 5
29.5 mm Black
Metal Duplex Type H2
21 Aug 1935
23 Feb 1942



Type 6
20.5 mm Black
Universal Machine
Type DT 200
15 Jan 1952
11 Jun 1958



Type 7
30.5 mm Black
Metal Duplex Type ?
23 Oct 1952



Type 8
31.5 mm Magenta
24 Mar 1960

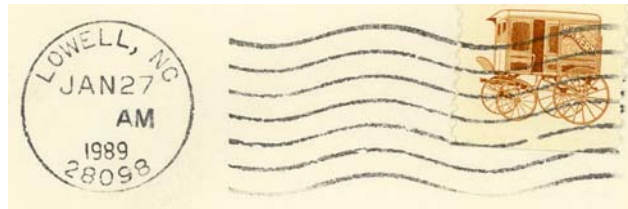


Type 9
22.5 mm Black
International Machine
Type AT/S 2712
30 Sep 1961
1965

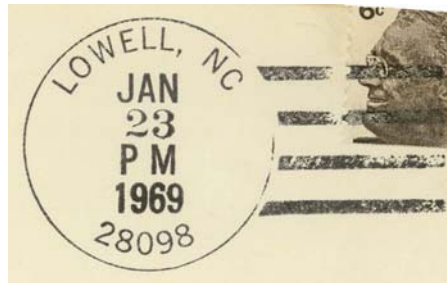
GASTON COUNTY

Lowell (Cont.)

(Gaston)



Type 10
22.5 mm Black
International Machine
Type ATS/z 2712 (28098)
18 Dec 1965
27 Jan 1989



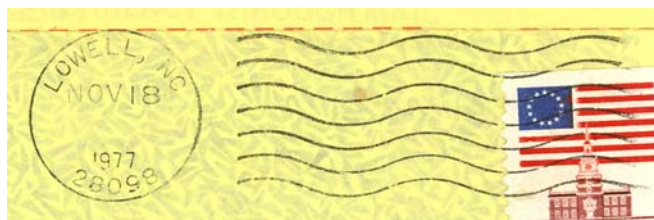
Type 11
33 mm Black
1963 Type F/2 4-Bar (28098)
23 Jan 1969



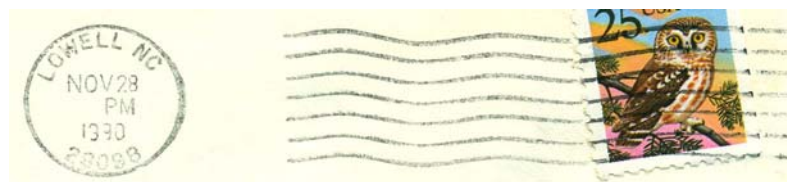
Type 12
32.5 mm Black
1963 Type F/2 4-Bar (28098)
4 Aug 1972
20 Jul 1978



Type 13
29.5 mm Magenta
4 Aug 1972



Type 14
22.5 mm Black
International Machine
Type AT/S 2712 (28098)
4 Sep 1974
18 Nov 1977



Type 15
20.5 mm Black
International Machine
Type Hz30 (28098)
28 Nov 1990
6 Dec 1993

GASTON COUNTY

Lowell (Cont.)

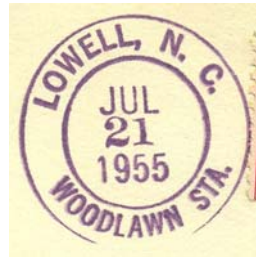
(Gaston)



Type 16
33 mm Magenta
1963 Type F/2 4-Bar (28098)
12 Mar 1992

Station Cancels

Woodlawn Station



Type 1
30.5 mm Purple
21 Jul 1955

30.5 mm Magenta
18 Mar 1957
6 Mar 1963

Rural Station Cancels

Art Cloth Rural Station

1 Jan 1927
15 Sep 1936

Lucia

(Gaston)

James L. Williams	1 Apr 1884
Jennie P. Williams	30 Apr 1885
John D. Williams	27 Nov 1885
Nathan A. McIntosh	21 Apr 1887
Eleazar L. Stroup	6 Apr 1898
Alburtis U. Stroup	16 Nov 1900
William S. Painter	14 Apr 1906
Discontinued	30 Mar 1907
Mail to Stanley	



Type 1
27.5 mm Black
17 Dec 1894



Type 2
28.5 mm Black
Doane Type 2-?
4 Oct 1904

GASTON COUNTY

Luffy

(Gaston)

Mary M. Rhyne	15 Sep 1891
Cora H. Costner	27 Dec 1893
John C. Friday	21 Jun 1895
Discontinued	25 Jan 1898
Arthur F. McKenzie	4 Sep 1901
Discontinued	31 Mar 1902
Mail to Dallas	

Mayesworth, Mayworth

(Gaston)

Lawrence A. Dodsworth	17 May 1907
Edgar L. Lewis	7 Jun 1910
Hugh L. Moore	22 Mar 1911
Name changed to Mayworth	26 Nov 1913
Hugh L. Moore	26 Nov 1913
Name changed to Cramerton	6 Dec 1920

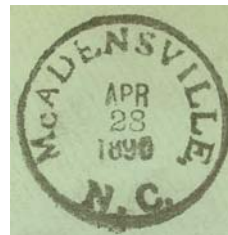


Type 1
32.5 mm Black
1910 Type B 4-Bar
15 Mar 1920

McAdensville, McAdenville

(Gaston)

George W. Ragan	20 Oct 1884
Edward M. Young	7 Sep 1885
Bartlett Y. McAden	22 Aug 1888
Annie S. Layton	20 Aug 1889
Name changed to McAdenville	29 Jun 1892
Annie S. Layton	29 Jun 1892
Henry M. McAden	13 Mar 1895
J. Monroe Skidmore	23 Dec 1899
Wiley S. McKee	5 Mar 1900
George W. Rumfelt	11 Feb 1902
James H. Wagstaff	6 Jul 1910
Robert A. Johnson, Acting	2 Jul 1925
Robert A. Johnson	25 Sep 1925
George L. Wright, Acting	26 Aug 1936
George L. Wright	12 Jan 1937
Blanche W. Poole	25 Jul 1938
Earl M. Cloninger Officer-In-Charge	30 Jun 1973
Earl M. Cloninger	23 Feb 1974
James F. Hill Officer-In-Charge	22 Jul 1977
Gertha Richards Officer-In-Charge	7 Oct 1977
Luther P. Starnes Jr.	28 Jan 1978
Gertha Richards Officer-In-Charge	20 Oct 1978
Edna B. Brawley Officer-In-Charge	1 Feb 1979
Ruby E. Johnson Officer-In-Charge	6 Apr 1979
Joseph E. Taylor	11 Aug 1979
Edna V. Johnson Officer-In-Charge	29 Apr 1983
Betty L. Poole	6 Aug 1983
Nellie M. Drennan Officer-In-Charge	7 Nov 1986
Susan P. Davern Officer-In-Charge	1 Dec 1986
Randy E. Parker Officer-In-Charge	31 Mar 1987
Thomas G. Moragne	4 Jul 1987
Patricia E. Rogers	31 Aug 1996



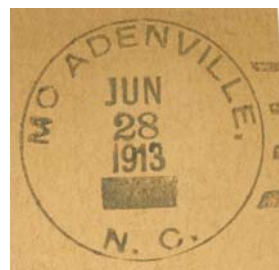
Type 1
28 mm Black
28 Apr 1890



Type 2
27.5 mm Black
15 Jun 1893
22 Aug 1894



Type 3
27.5 mm Black
20 Apr 1896
7 Oct 1897



Type 4
32 mm Black
1910 Type B 4-Bar
28 Jun 1913

GASTON COUNTY

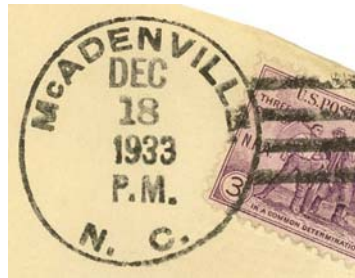
McAdenville, McAdenville (Cont.)

(Gaston)

Herman Morris Teeter Jr.	12 Sep 1998
Candace W. Grayson Officer-In-Charge	
Wanda L. Sanders Officer-In-Charge	19 Jun 2008
Concetta L. Ager Officer-In-Charge	7 Jan 2009
Cherita C. Jones-Thomas Officer-In-Charge	4 Dec 2009
Cherita C. Jones-Thomas	16 Jan 2010



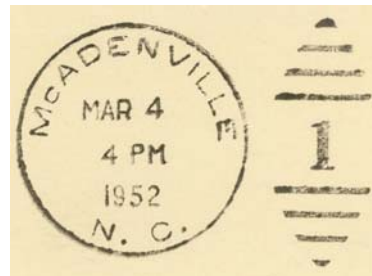
Type 5
32 mm Black
1920 Type C/1 4-Bar
30 Nov 1923



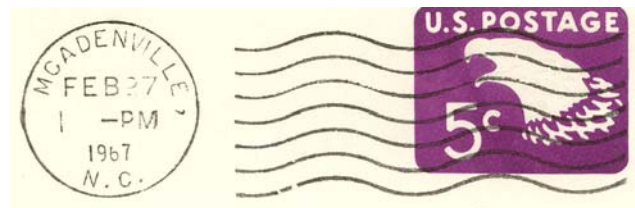
Type 6
32.5 mm Black
1924 Type D 4-Bar
18 Dec 1933
12 Dec 1935



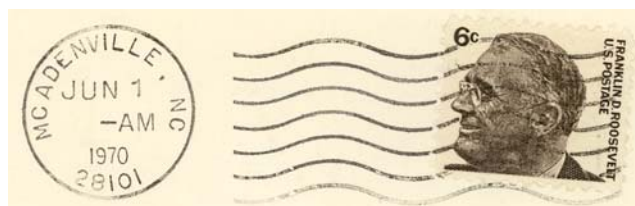
Type 7
33 mm Black
1936 Type F/1 4-Bar
20 Oct 1941
7 Dec 1942



Type 8
30.5 mm Black
Metal Duplex Type ?
6 Dec 1951
12 Nov 1959



Type 9
23.5 mm Black
International Machine
Type AT/S 2721
8 Dec 1962
27 Feb 1967

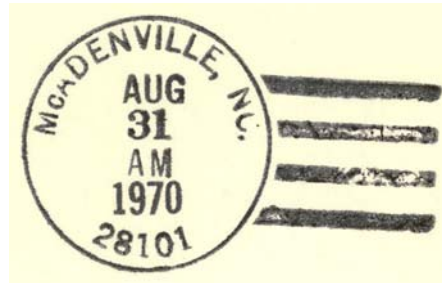


Type 10
23 mm Black
International Machine
Type AT/S/z 2721 (28101)
18 Oct 1969
26 Feb 1980

GASTON COUNTY

McAdenville, McAdenville (Cont.)

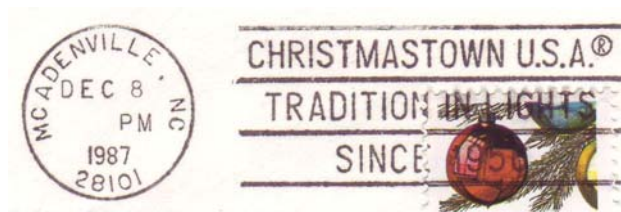
(Gaston)



Type 11
33 mm Black
1963 Type F/2 4-Bar (28101)
31 Aug 1970
24 Jun 1974



Type 12
32 mm Black
1963 Type F/2 4-Bar (28101)
11 Apr 1984



Type 13
23 mm Black
International Machine
Type Hz26 (28101)
8 Dec 1987
14 Dec 1994



Type 14
29 mm Red
Self-Inking Postmarker (28101)
16 May 1991
13 Nov 2000



Type 15
31 mm Red
Self-Inking Postmarker (28101)
17 May 1999



Type 16
31 mm Red
Self-Inking Postmarker (28101)
12 Dec 2006

GASTON COUNTY

McAdenville, McAdenville (Cont.)

(Gaston)

Machine Service Markings



Type 1
23.5 mm Black
International Machine
11 Sep 1964

Mountain Island

(Gaston)

John Tate	5 May 1854
John Tate, CSA	6 Jul 1861
CSA office closed on or before	30 Apr 1865
Federal office discontinued	4 Mar 1867
Purnell P. Zimmerman	9 Jun 1875
Ferdinand A. Tate	3 Oct 1878
Felix A. Savin	28 Apr 1884
Frank B. Hooper	1 May 1884
William T. Jordan	1 Dec 1884
James E. Tate	26 Oct 1904
Belle Miller	3 May 1906
William O. Gardner	8 Feb 1907
Discontinued	30 Apr 1910

*Mountain Island, N.C.
April 14*

Manuscript
25 Jul 1857
14 Apr 1862

*Mountain Island N.C.
4/22/76*

Manuscript
20 Apr 1876
22 Apr 1876



Type 1
26 mm Black
19 Sep 1876



Type 2
31.5 mm Blue
25 Mar 1878

*Mountain Island, N.C.
Apr 12/88*

Manuscript
12 Apr 1882



Type 3
27.5 mm Black
18 Jun 1882
1 Jun 1885

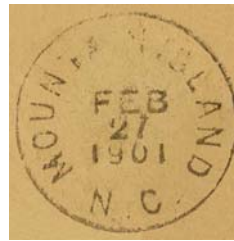
GASTON COUNTY

Mountain Island (Cont.)

(Gaston)



Type 4
28 mm Black
3 Apr 1897



Type 5
29 mm Black
27 Feb 1901
4 Mar 1904



Type 6
31 mm Black
1908 Type A/2 4-Bar
9 Sep 1907

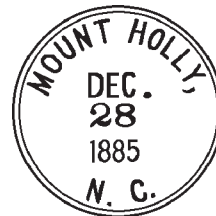
Mount Holly, name changed from Woodlawn

(Gaston)

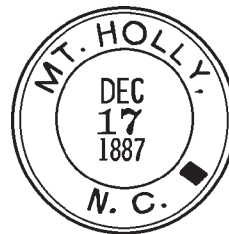
Daniel E. Rhyne	15 Jul 1879
James C. Hamlett	26 Feb 1883
Albert P. Lentz	10 Aug 1885
Robert P. Rutledge	6 Aug 1888
James W. McKee	31 Oct 1889
Washington F. Holland	21 Dec 1891
Ada Dunn	9 Apr 1894
Washington F. Holland	11 May 1898
John F. Joy	22 May 1902
Rufus M. Jenkins	31 Jan 1907
R. P. Gardner	15 Aug 1913
F. L. Abernathy, Acting	1 Oct 1921
F. L. Abernathy	10 Aug 1922
William F. Ballard, Acting	15 May 1923
William F. Ballard	19 Dec 1923
Oliver F. Hoffman, Acting	28 Apr 1936
Oliver F. Hoffman	8 Jun 1936
James W. Nantz, Sr., Acting	31 May 1951
James W. Nantz, Sr.	12 Mar 1952
Charles W. Craig, Acting	6 Mar 1959
Theodore L. Ware, Jr., Acting	17 Mar 1961
Theodore L. Ware, Jr.	31 Aug 1962

*Mount Holly N.C.
Nov 28/79*

Manuscript
28 Nov 1879
25 Jun 1881



Type 1
28 mm Black
28 Dec 1885
15 Jan 1887



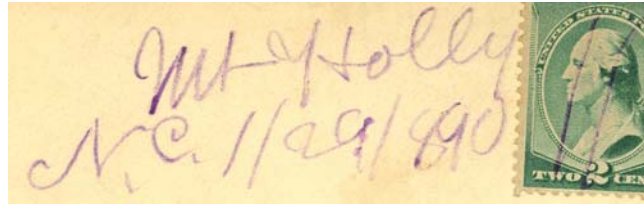
Type 2
30 mm Blue
17 Dec 1887

GASTON COUNTY

Mount Holly (Cont.)

(Gaston)

James F. Richardson	2 Aug 1975
Mary E. Small Officer-In-Charge	8 Jan 1982
Roger C. Rule	1 May 1982
Billy H. Hoyle Officer-In-Charge	20 Sep 1983
LaVerne T. Graham	21 Jan 1984
Eddie Canady Officer-In-Charge	1 Dec 2004
Ronald Cole Officer-In-Charge	12 Aug 2005
Juanita D. Meeks Officer-In-Charge	20 Sep 2006
Ivy Dean Mitchell	20 Jan 2007



Manuscript
29 Jan 1890



Type 3
27 mm Black
10 Dec 1890
5 Oct 1894



Type 4
28 mm Black
6 Feb 1896
7 Mar 1899



Type 5
28 mm Black
10 Jan 1900
16 Mar 1900



Type 6
29.5 mm Black
Metal Duplex Type H2
20 Sep 1900
27 Feb 1901

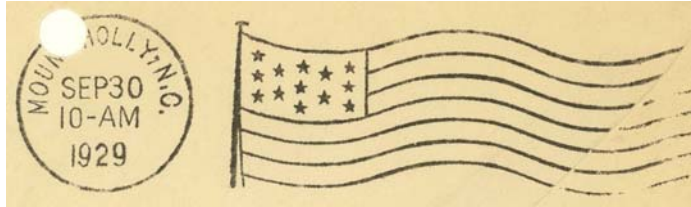


Type 7
30.5 mm Black
Metal Duplex Type H2
10 Oct 1914
5 Jan 1915

GASTON COUNTY

Mount Holly (Cont.)

(Gaston)



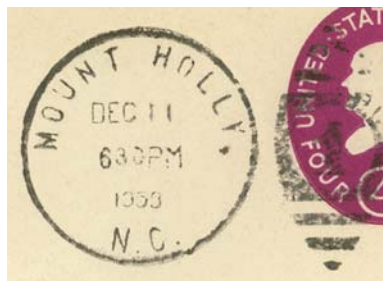
Type 8
23.5 mm Black
American Machine
Type A14
30 Sep 1929
26 Mar 1934



Type 9
32 mm Black
1930 Type E 4-Bar
13 Jul 1932



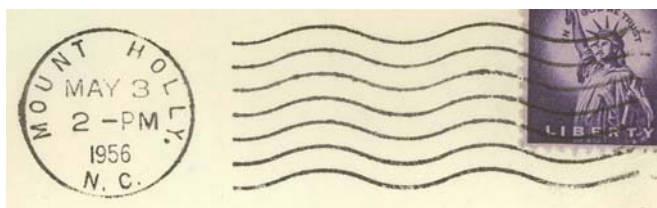
Type 10
22.5 mm Black
International Machine
Type 17
18 Dec 1941
26 Oct 1953



Type 11
31.5 mm Black
Metal Duplex Type E2
11 Dec 1953



Type 12
30.5 mm Magenta
19 Jul 1954

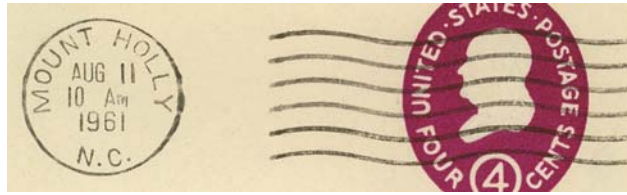


Type 13
22.5 mm Black
International Machine
Type AT/S 2721
3 Jan 1955
2 Apr 1957

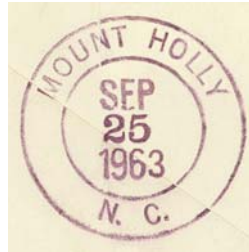
GASTON COUNTY

Mount Holly (Cont.)

(Gaston)



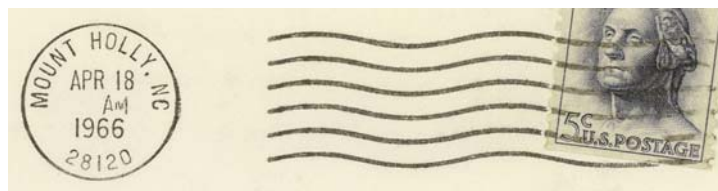
Type 14
21 mm Black
Universal Machine
Type DT 300
28 Oct 1958
14 Jan 1963



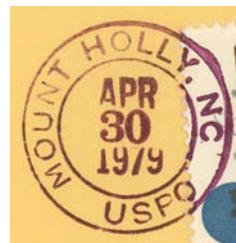
Type 15
29.5 mm Magenta
25 Sep 1963



Type 16
32 mm Black
1936 Type F/1 4-Bar
25 Dec 1964



Type 17
21 mm Black
Universal Machine
Type DTSz 300 (28120)
18 Apr 1966
20 Jul 1981

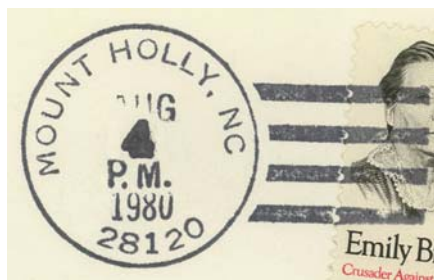


Type 18
28 mm Magenta
30 Apr 1979

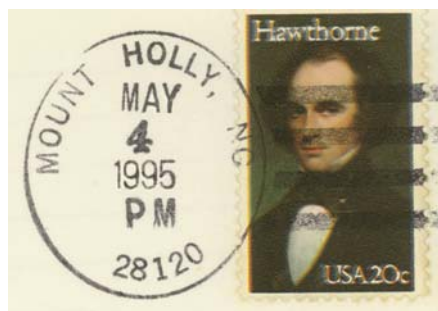
GASTON COUNTY

Mount Holly (Cont.)

(Gaston)



Type 19
31.5 mm Black
1963 Type F/2 4-Bar (28120)
4 Aug 1980



Type 20
33.5 mm Black
1963 Type F/2 4-Bar (28120)
4 May 1995

Third Class Cancelers



Type 1
37 x 17.5 mm Black
10 Oct 1960

GASTON COUNTY

Nail Factory

(Gaston)

William E. Rose	10 Mar 1848
Thomas Darling	5 Aug 1854
Marion D. Friday, CSA	15 Aug 1861
CSA office discontinued	20 Jan 1862
Federal office discontinued	10 Jun 1867

Old Furnace

(Gaston)

Major Whitesides	22 Jun 1848
James White	28 Feb 1850
Samuel F. Torrance	28 Jan 1851
John E. White	2 Nov 1855
No record of CSA operation	
Martha J. Terrance	23 Feb 1866
Mary S. Ramsour	15 May 1867
Mary C. White	28 Aug 1868
Thomas H. White	23 Apr 1878
Discontinued	1 Sep 1880
John J. Ormand	31 May 1883
Robert C. Ormand	7 Jan 1892
Hanna J. White	17 Jul 1877
Sidney L. Kiser	27 Jul 1898
Luther R. Ormand	2 Nov 1898
Discontinued	28 Feb 1902

Mail to Kings Mountain, Cleveland County

Old Furnace W.C. Manuscript
1872

Perry

(Gaston)

Perry R. Long	31 May 1883
Hiram S. Sellers	5 Feb 1892
Discontinued	28 Feb 1902

Mail to Kings Mountain, Cleveland County

GASTON COUNTY

Philipsburg

(Gaston)

Rufus C. Baker 18 Apr 1902
 Discontinued 2 Jan 1907
 Mail to Kings Mountain, Cleveland County

Pin Hook Depot

(Gaston)

John M. Lineberger 24 Oct 1873
 John T. Suggs 18 Jan 1875
 James P. Glenn 21 Jan 1876
 Name changed to **Lowell** 23 Oct 1879

Pleasant Ridge, Pleasantridge

(Gaston)

David A. Jenkins 28 Mar 1857
 Robert A. H. Neagle 18 Jul 1859
 David A. Jenkins 26 May 1860
 David A. Jenkins, CSA 6 Jul 1861
 CSA office closed on or before 30 Apr 1865
 Priscilla R. Holland 29 Jan 1866
 Isabella Neagle 8 Jan 1867
 Discontinued 9 Aug 1869
 George W. Falls 23 Feb 1874
 Name changed to **Pleasantridge** 7 Oct 1895
 Thomas G. Falls 7 Oct 1895
 Bertie L. Falls 15 Jul 1899
 William M. Nolan 13 Feb 1900
 Daniel D. Grier 23 Jan 1907
 Discontinued 31 May 1907
 Mail to Gastonia

*Pleasantridge
 March 7, 1870*

Manuscript
 7 Mar 1879



Type 1
 28 mm Black
 13 Feb 1894
 15 Feb 1894



Type 2
 27.5 mm Black
 20 Feb 1897
 21 Mar 1900

Rudasill

(Gaston)

Jacob Rudasill 18 Sep 1889
 Discontinued 29 Apr 1891
 Papers to Carpenter

GASTON COUNTY

Snapp

(Gaston)

Sarah J. A. Riser	31 May 1883
Sarah J. A. Kiser	12 Jun 1883
Discontinued	28 Feb 1902

Papers to Bessemer City

Manuscript
16 Jun 1886

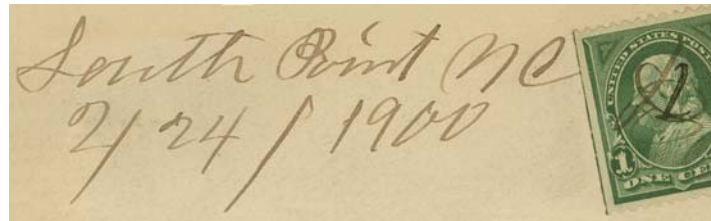
South Point, from Lincoln County

(Gaston)

Samuel W. Craig	21 Dec 1846
Samuel W. Craig, CSA	Bibliog. #19
CSA office closed on or before	30 Apr 1865
Mary A. Craig	25 Jan 1866
Rebecca M. Craig	23 Apr 1867
Rebeca M. McLaughlen	5 Mar 1868
Robert G. McLean	14 May 1873
D. T. Pegram	30 Nov 1874
Jonathan G. Gullick	3 Feb 1875
John E. Dameron	3 Dec 1878
William M. Glenn	12 May 1888
John A. Gullick	19 Jun 1890
Discontinued	28 Feb 1902

Mail to Lowell

Manuscript
28 Sep 1855



Manuscript
26 Apr 1899
24 Feb 1900



Type 1
28 mm Black
19 Nov 1884
12 Jan 1894

Stanley's Creek, Stanley

(Gaston)

Valentine Derr	9 Apr 1856
Moved to Brevard Station by CSA	20 Jan 1863
Re-established as Stanley's Creek	
Mary Abernathy	20 Mar 1866
John Huggins	3 Jul 1866
A. R. Rutledge	24 Jul 1866
Harriett Cloninger	23 Sep 1867
Discontinued	9 Dec 1868
Walter C. Withers	15 Jul 1869
Thomas F. Wilkinson	3 Jul 1873



Type 1
26 mm Purple
10 Jul 1878

GASTON COUNTY

Stanley's Creek, Stanley (Cont.)

(Gaston)

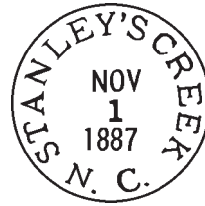
Adaline E. McLurd	30 Oct 1884
John S. Huggins	27 Sep 1892
Name changed to Stanley	22 Mar 1894
Adaline E. McLurd	22 Mar 1894
Eliza J. Newell	2 Oct 1897
John L. Shelton	12 Dec 1905
Frank Boyd	4 May 1914
James E. Wallace	19 Mar 1924
Walter Marsh Cavin, Acting	21 Apr 1936
Walter Marsh Cavin	13 May 1936
Raleigh C. Garner, Acting	16 Jun 1941
Walter Marsh Cavin	31 Jan 1946
James E. Smith	1 Dec 1947
Jack S. Bently	1 Apr 1948
Ernest Lee Cherry, Acting	1 Jul 1949
Ernest Lee Cherry	5 Aug 1949
Earl M. Cloninger Officer-In-Charge	7 May 1976
Harold L. Denton	23 Oct 1976
James C. Garver Officer-In-Charge	4 Mar 1977
Carlton D. Robinson Officer-In-Charge	5 Aug 1977
Homer E. Benson Officer-In-Charge	4 Jan 1978
Hazel E. Ellis Officer-In-Charge	25 Apr 1978
James F. Hill Officer-In-Charge	5 May 1978
Mrs. Mary E. Small Officer-In-Charge	29 Dec 1978
Frank M. Guida Jr.	11 Aug 1979
Laura C. Brown	3 Jun 2000
Eddie L. Canady Officer-In-Charge	
Mary E. Eckler	11 Dec 2004

*Stanley's Creek, N.C.
Feb - 13 - 85*

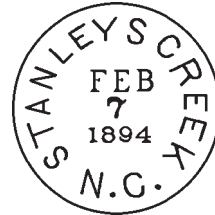
Manuscript
13 Feb 1885
12 Mar 1885



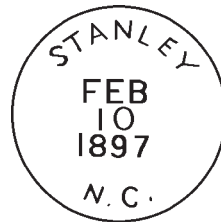
Type 2
27 mm Black
5 Jan 1886



Type 3
26.5 mm Black
1 Nov 1887



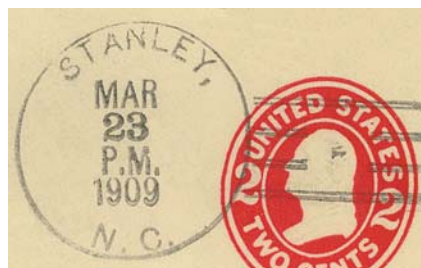
Type 4
27.5 mm Black
23 Sep 1890
7 Feb 1894



Type 5
28.5 mm Black
1 Oct 1894
25 Mar 1897



Type 6
30.5 mm Black
Metal Duplex Type H2
27 Jul 1906



Type 7
31.5 mm Black
1906 Type A/1 4-Bar
31 Mar 1908
3 May 1911

GASTON COUNTY

Stanley's Creek, Stanley (Cont.)

(Gaston)



Type 8
32 mm Black
1910 Type B 4-Bar
9 Dec 1911
22 Apr 1912



Type 9
32 mm Black
1910 Type B 4-Bar
11 Jan 1923



Type 10
32 mm Black
1930 Type E 4-Bar
6 Apr 1932



Type 11
27 mm Black
Metal Duplex Type E2
27 Sep 1933
16 Sep 1939

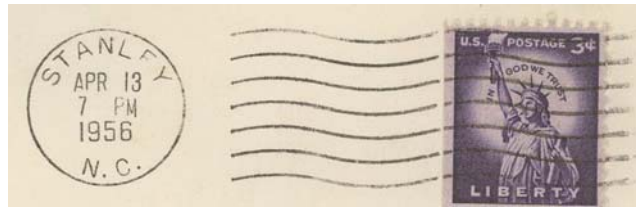


Type 12
31 mm Black
Metal Duplex Type ?
24 Jan 1949
17 Dec 1949

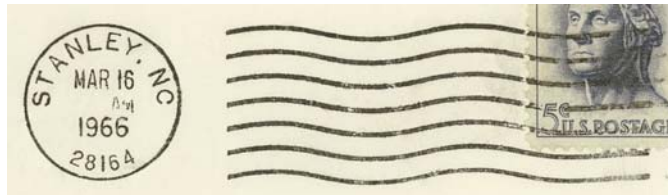
GASTON COUNTY

Stanley's Creek, Stanley (Cont.)

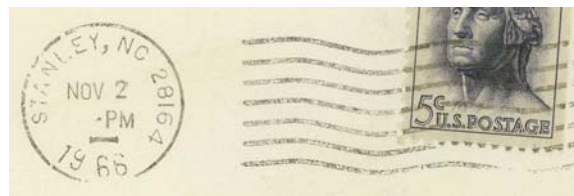
(Gaston)



Type 13
21 mm Black
Universal Machine
Type DT 200K
18 Sep 1950
8 Oct 1964



Type 14
20.5 mm Black
Universal Machine
Type DTSz 200K (28164)
16 Mar 1966
8 Oct 1964



Type 15
21.5 mm Black
International Machine
Type Nz30 (28164)
22 Aug 1966
9 Oct 1967



Type 16
22 mm Black
International Machine
Type Hz30 (28164)
4 Feb 1967
4 Dec 1984



Type 17
29 mm Magenta
30 Apr 1979

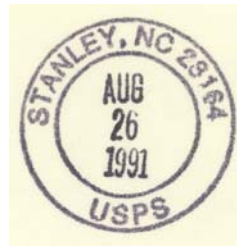


Type 18
29 mm Black
13 Aug 1984
13 May 1985

GASTON COUNTY

Stanley's Creek, Stanley (Cont.)

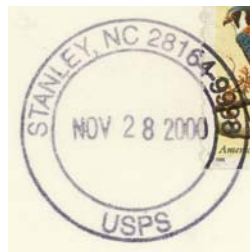
(Gaston)



Type 19
28.5 mm Black
Self-Inking Postmarker (28164)
26 Aug 1991



Type 20
31 mm Black
Self-Inking Postmarker
Type 3B (28164)
26 Aug 1991
8 Mar 2007



Type 21
30 mm Black
Self-Inking Postmarker
(28164-9998)
28 Nov 2000



Type 22
30 mm Red
Self-Inking Postmarker (28164)
21 Feb 2006



Type 23
31 mm Black
Self-Inking Postmarker (28164)
5 Mar 2008

GASTON COUNTY

Stanley's Creek, Stanley (Cont.)

(Gaston)

Third Class Cancelers



Type 1
44.5 x 24 mm Black

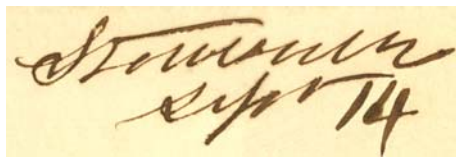


Type 2
36.5 x 17 mm Black

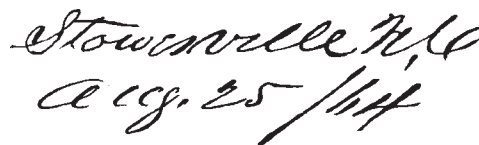
Stowesville, from Lincoln County

(Gaston)

Edwin B. Stowe	21 Dec 1846
Larkin Stowe	14 Jan 1848
Edwin B. Stowe	29 Oct 1851
E. B. Stowe, CSA	Bibliog. #19
CSA office closed on or before	30 Apr 1865
Federal office discontinued	11 Dec 1866



Manuscript
6 Apr 1847
14 Sep 185x



Manuscript
25 Aug 1864

GASTON COUNTY

Vestal's Ford

(Gaston)

Charles J. Peterson	26 Apr 1860
Charles J. Peterson, CSA	15 Jul 1861
CSA office closed on or before	30 Apr 1865
Federal office discontinued	28 Jan 1867

*Vestal Ford N.C.
Nov 29*

Manuscript
29 Nov 1862

Walnut Shade

(Gaston)

James F. W. Freeman	8 May 1860
James F. W. Freeman, CSA	6 Jul 1861
CSA office closed on or before	30 Apr 1865
Federal office discontinued	11 Dec 1866
Gordon Hoffman	21 Sep 1870
Discontinued	17 Oct 1873

White Pine

(Gaston)

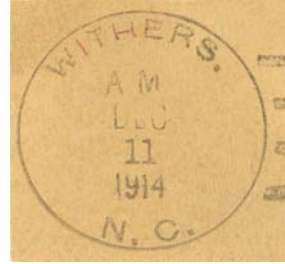
Benjamin Black	9 Sep 1854
Discontinued	7 Mar 1859
Jacob M. Rudisil	22 May 1860
Jacob M. Rudisil, CSA	21 Dec 1861
Benaja Black, CSA	Bibliog. #19
CSA office closed on or before	30 Apr 1865
Re-established and Name changed to Cherryville	2 Nov 1865

GASTON COUNTY

Withers

(Gaston)

Julius L. Bush	6 Sep 1913
Joseph M. Kincaid	13 Mar 1916
Discontinued	30 Sep 1916
Mail to Gastonia	



Type 1
32.5 mm Black
1910 Type B 4-Bar
11 Dec 1914

Woodlawn, from Lincoln County

(Gaston)

F. L. Hoffman	21 Dec 1846
Robert Rankin	26 Sep 1851
James C. Rudisill	7 Feb 1854
James F. W. Freeman	27 Jul 1858
Enoch P. Clemmer	6 Nov 1858
Frederick Nims	5 Jan 1860
No record of CSA operation	
Angelina Shields	29 May 1866
Martin S. Merrill	26 Mar 1867
Discontinued	9 Aug 1869
Joseph Alcorn	30 Nov 1869
John Prendergast	12 Mar 1872
Robert C. G. Love	7 Jan 1874
Daniel E. Rhyne	26 Aug 1878
Name changed to Mount Holly	15 Jul 1879

*Woodlawn N.C.
March 25th*

Manuscript
25 Mar 184x
29 Oct 1847

*Woodlawn N.C.
Dec 24th*

Manuscript
24 Dec 185x
4 Feb 1861

*Woodlawn N.C.
June 10th*

Manuscript
26 Mar 1861
10 Jun 1862

*Woodlawn N.C.
June 20*

Manuscript
28 Jun 187x
19 Aug 187x



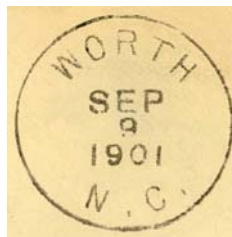
Type 1
25 mm Black
8 Apr 187x

GASTON COUNTY

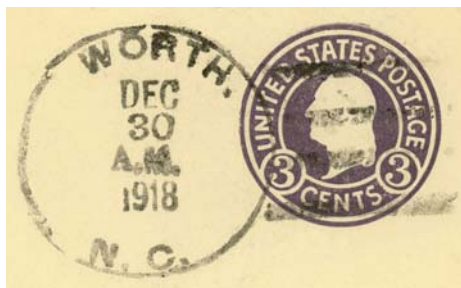
Worth

(Gaston)

Lila L. Carpenter	1 Oct 1900
Oscar D. Carpenter	26 Jan 1903
Hiram A. Costner, Acting	23 Jul 1921
Hiram A. Costner	22 Aug 1921
Discontinued	15 Oct 1925
Mail to Dallas	



Type 1
28.5 mm Black
21 Mar 1901
13 Aug 1910



Type 2
33.5 mm Black
1910 Type B 4-Bar
4 Feb 1914
30 Dec 1918



Type 3
32.5 mm Black
1910 Type B 4-Bar
6 Nov 1919

Worthington

(Gaston)

Marion S. Pasour	24 Jun 1891
Discontinued	10 Sep 1892
Papers to Carpenter	